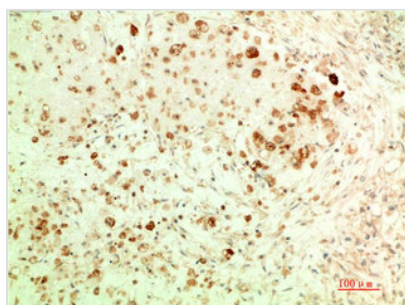




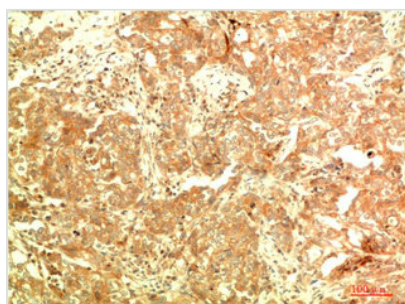
# ATG5 Monoclonal Antibody

<b>Product Code</b>	CSB-MA518180
<b>Storage</b>	Upon receipt, store at -20°C or -80°C. Avoid repeated freeze.
<b>Research Use</b>	Shipped at 4°C. Upon delivery aliquot and store at -20°C or -80°C. Avoid repeated freeze.
<b>Uniprot No.</b>	Q9H1Y0
<b>Immunogen</b>	Recombinant Protein
<b>Raised In</b>	Mouse
<b>Species Reactivity</b>	Human,Mouse,Rat
<b>Tested Applications</b>	ELISA,WB,IHC;Recommended dilution:WB:1:500-1:5000,IHC:1:50-1:500
<b>Form</b>	Liquid
<b>Conjugate</b>	Non-conjugated
<b>Storage Buffer</b>	PBS, 50% glycerol, 0.05% Proclin 300, 0.05%BSA
<b>Purification Method</b>	The antibody was affinity-purified from mouse ascites by affinity-chromatography using specific immunogen.
<b>Alias</b>	Autophagy protein 5 (APG5-like) (Apoptosis-specific protein)
<b>Product Type</b>	Monoclonal Antibody
<b>Immunogen Species</b>	Homo sapiens (Human)
<b>Clone No.</b>	27F6

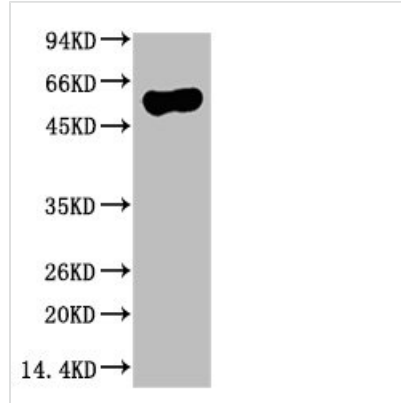
## Image



Immunohistochemical analysis of paraffin-embedded Human Ovarian Carcinoma Tissue using ATG5 Mouse mAb diluted at 1:200.



Immunohistochemical analysis of paraffin-embedded Human Breast Carcinoma Tissue using ATG5 Mouse mAb diluted at 1:200.



Western blot analysis of HeLa Cell Lysate using ATG5 Mouse mAb diluted at 1:10000

## Usage

For Research Use Only. Not for use in diagnostic or therapeutic procedures.