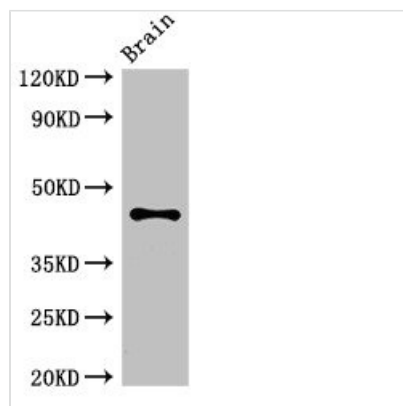




ATG4B Antibody

Product Code	CSB-PA002290LA01HU
Storage	Upon receipt, store at -20°C or -80°C. Avoid repeated freeze.
Uniprot No.	Q9Y4P1
Immunogen	Recombinant Human Cysteine protease ATG4B protein (350-400AA)
Raised In	Rabbit
Species Reactivity	Human, Mouse
Tested Applications	ELISA, WB, IHC, IF; Recommended dilution: WB:1:500-1:5000, IHC:1:20-1:200, IF:1:50-1:200
Form	Liquid
Conjugate	Non-conjugated
Storage Buffer	Preservative: 0.03% Proclin 300 Constituents: 50% Glycerol, 0.01M PBS, pH 7.4
Purification Method	>95%, Protein G purified
Isotype	IgG
Clonality	Polyclonal
Alias	Cysteine protease ATG4B (EC 3.4.22.-) (AUT-like 1 cysteine endopeptidase) (Autophagin-1) (Autophagy-related cysteine endopeptidase 1) (Autophagy-related protein 4 homolog B) (hAPG4B), ATG4B, APG4B AUTL1 KIAA0943
Immunogen Species	Homo sapiens (Human)
Research Area	Cancer
Target Names	ATG4B

Image



Western Blot

Positive WB detected in: Mouse brain tissue

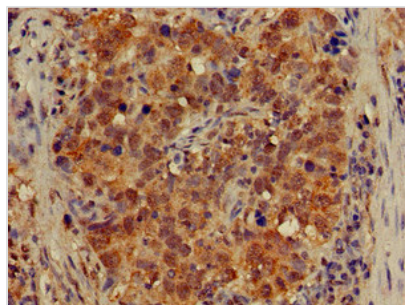
All lanes: ATG4B antibody at 3.4µg/ml

Secondary

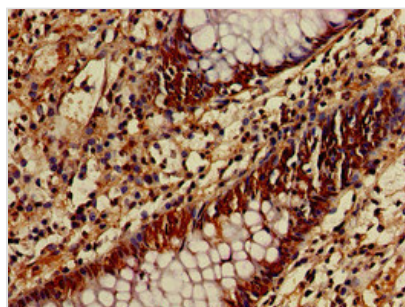
Goat polyclonal to rabbit IgG at 1/50000 dilution

Predicted band size: 45, 53, 32, 38, 43 kDa

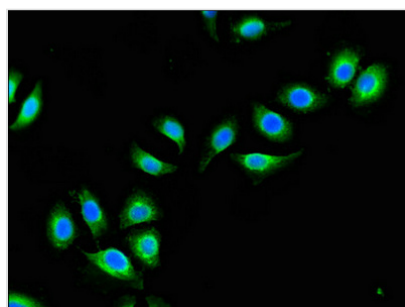
Observed band size: 45 kDa



Immunohistochemistry of paraffin-embedded human pancreatic cancer using CSB-PA002290LA01HU at dilution of 1:100



Immunohistochemistry of paraffin-embedded human colon cancer using CSB-PA002290LA01HU at dilution of 1:100



Immunofluorescent analysis of A549 cells using CSB-PA002290LA01HU at dilution of 1:100 and Alexa Fluor 488-conjugated AffiniPure Goat Anti-Rabbit IgG(H+L)

Usage

For Research Use Only. Not for use in diagnostic or therapeutic procedures.