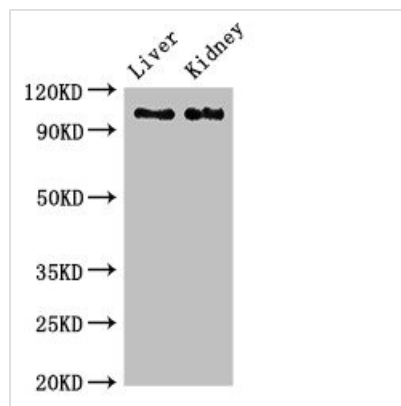




C6 Antibody

Product Code	CSB-PA004036LA01HU
Storage	Upon receipt, store at -20°C or -80°C. Avoid repeated freeze.
Uniprot No.	P13671
Immunogen	Recombinant Human Complement component C6 protein (521-655AA)
Raised In	Rabbit
Species Reactivity	Human, Mouse, Rat
Tested Applications	ELISA, WB, IHC; Recommended dilution: WB:1:500-1:5000, IHC:1:20-1:200
Form	Liquid
Conjugate	Non-conjugated
Storage Buffer	Preservative: 0.03% Proclin 300 Constituents: 50% Glycerol, 0.01M PBS, pH 7.4
Purification Method	>95%, Protein G purified
Isotype	IgG
Clonality	Polyclonal
Alias	Complement component C6, C6
Immunogen Species	Homo sapiens (Human)
Research Area	Immunology
Target Names	C6

Image



Western Blot

Positive WB detected in: Rat liver tissue, Mouse kidney tissue

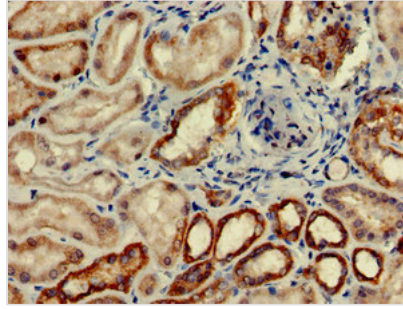
All lanes: C6 antibody at 2.7µg/ml

Secondary

Goat polyclonal to rabbit IgG at 1/50000 dilution

Predicted band size: 105 kDa

Observed band size: 105 kDa



Immunohistochemistry of paraffin-embedded human kidney tissue using CSB-PA004036LA01HU at dilution of 1:100

Usage

For Research Use Only. Not for use in diagnostic or therapeutic procedures.