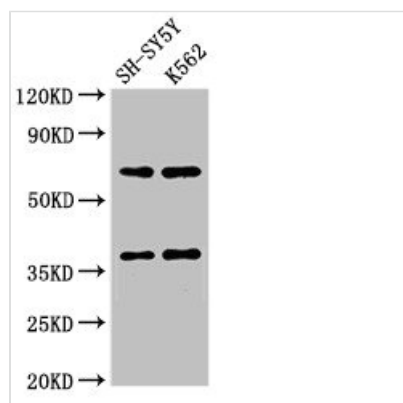




# CTSH Antibody

<b>Product Code</b>	CSB-PA006191LA01HU
<b>Storage</b>	Upon receipt, store at -20°C or -80°C. Avoid repeated freeze.
<b>Uniprot No.</b>	P09668
<b>Immunogen</b>	Recombinant Human Pro-cathepsin H protein (116-219AA)
<b>Raised In</b>	Rabbit
<b>Species Reactivity</b>	Human
<b>Tested Applications</b>	ELISA, WB, IHC; Recommended dilution: WB:1:500-1:5000, IHC:1:20-1:200
<b>Form</b>	Liquid
<b>Conjugate</b>	Non-conjugated
<b>Storage Buffer</b>	Preservative: 0.03% Proclin 300 Constituents: 50% Glycerol, 0.01M PBS, pH 7.4
<b>Purification Method</b>	>95%, Protein G purified
<b>Isotype</b>	IgG
<b>Clonality</b>	Polyclonal
<b>Alias</b>	Pro-cathepsin H [Cleaved into: Cathepsin H mini chain; Cathepsin H (EC 3.4.22.16); Cathepsin H heavy chain; Cathepsin H light chain], CTSH, CPSB
<b>Immunogen Species</b>	Homo sapiens (Human)
<b>Research Area</b>	Neuroscience
<b>Target Names</b>	CTSH

## Image



### Western Blot

Positive WB detected in: SH-SY5Y whole cell

lysate, K562 whole cell lysate

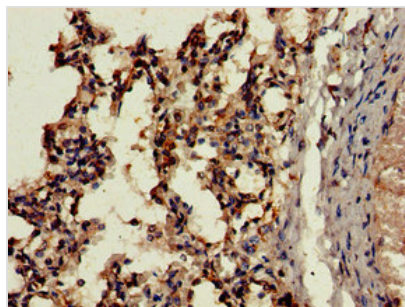
All lanes: CTSH antibody at 2.7µg/ml

Secondary

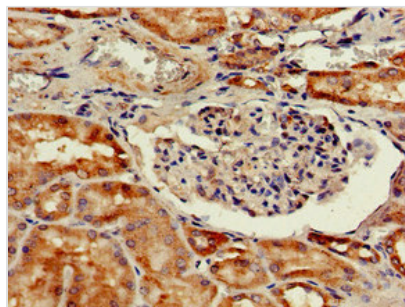
Goat polyclonal to rabbit IgG at 1/50000 dilution

Predicted band size: 38 kDa

Observed band size: 38 kDa



Immunohistochemistry of paraffin-embedded human lung tissue using CSB-PA006191LA01HU at dilution of 1:100



Immunohistochemistry of paraffin-embedded human kidney tissue using CSB-PA006191LA01HU at dilution of 1:100

## Usage

For Research Use Only. Not for use in diagnostic or therapeutic procedures.