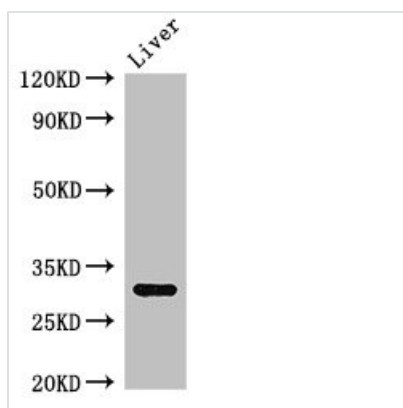




ENDO G Antibody

Product Code	CSB-PA007665LA01HU
Storage	Upon receipt, store at -20°C or -80°C. Avoid repeated freeze.
Uniprot No.	Q14249
Immunogen	Recombinant Human Endonuclease G, mitochondrial protein (49-297AA)
Raised In	Rabbit
Species Reactivity	Human, Mouse
Tested Applications	ELISA, WB; Recommended dilution: WB:1:500-1:5000
Form	Liquid
Conjugate	Non-conjugated
Storage Buffer	Preservative: 0.03% Proclin 300 Constituents: 50% Glycerol, 0.01M PBS, pH 7.4
Purification Method	>95%, Protein G purified
Isotype	IgG
Clonality	Polyclonal
Alias	Endonuclease G, mitochondrial (Endo G) (EC 3.1.30.-), ENDOG
Immunogen Species	Homo sapiens (Human)
Research Area	Cell Biology
Target Names	ENDO G

Image



Western Blot

Positive WB detected in: Mouse liver tissue

All lanes: ENDOG antibody at 2.7µg/ml

Secondary

Goat polyclonal to rabbit IgG at 1/50000 dilution

Predicted band size: 33 kDa

Observed band size: 33 kDa

Usage

For Research Use Only. Not for use in diagnostic or therapeutic procedures.