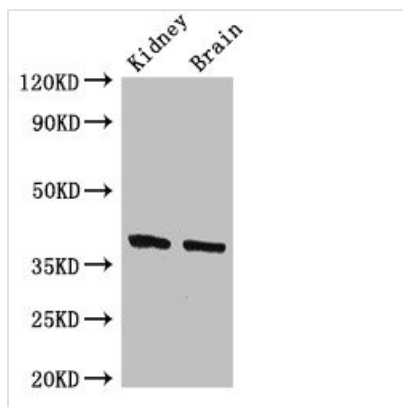




# FOXE1 Antibody

<b>Product Code</b>	CSB-PA008811LA01HU
<b>Storage</b>	Upon receipt, store at -20°C or -80°C. Avoid repeated freeze.
<b>Uniprot No.</b>	O00358
<b>Immunogen</b>	Recombinant Human Forkhead box protein E1 protein (184-365AA)
<b>Raised In</b>	Rabbit
<b>Species Reactivity</b>	Human, Mouse
<b>Tested Applications</b>	ELISA, WB, IF; Recommended dilution: WB:1:500-1:5000, IF:1:50-1:200
<b>Form</b>	Liquid
<b>Conjugate</b>	Non-conjugated
<b>Storage Buffer</b>	Preservative: 0.03% Proclin 300 Constituents: 50% Glycerol, 0.01M PBS, pH 7.4
<b>Purification Method</b>	>95%, Protein G purified
<b>Isotype</b>	IgG
<b>Clonality</b>	Polyclonal
<b>Alias</b>	Forkhead box protein E1 (Forkhead box protein E2) (Forkhead-related protein FKHL15) (HFKH4) (HNF-3/fork head-like protein 5) (HFKL5) (Thyroid transcription factor 2) (TTF-2), FOXE1, FKHL15 FOXE2 TITF2 TTF2
<b>Immunogen Species</b>	Homo sapiens (Human)
<b>Research Area</b>	Epigenetics and Nuclear Signaling
<b>Target Names</b>	FOXE1

## Image



### Western Blot

Positive WB detected in: Mouse kidney tissue,  
Mouse brain tissue

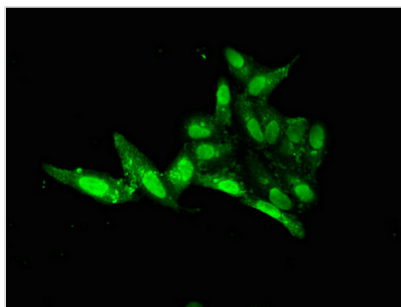
All lanes: FOXE1 antibody at 2.4μg/ml

### Secondary

Goat polyclonal to rabbit IgG at 1/50000 dilution

Predicted band size: 39 kDa

Observed band size: 39 kDa



Immunofluorescent analysis of HeLa cells using CSB-PA008811LA01HU at dilution of 1:100 and Alexa Fluor 488-conjugated AffiniPure Goat Anti-Rabbit IgG(H+L)