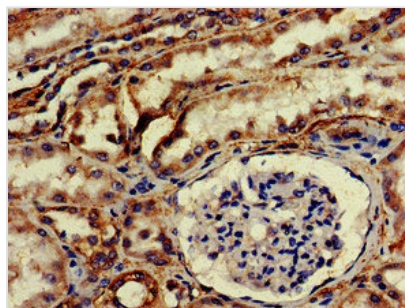




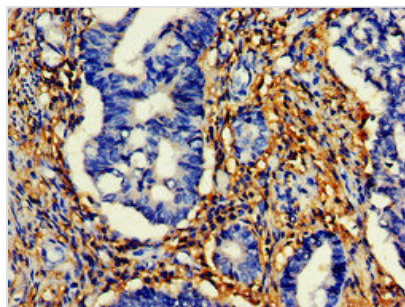
HTRA2 Antibody

Product Code	CSB-PA010902EA01HU
Storage	Upon receipt, store at -20°C or -80°C. Avoid repeated freeze.
Uniprot No.	O43464
Immunogen	Recombinant Human Serine protease HTRA2, mitochondrial protein (334-458AA)
Raised In	Rabbit
Species Reactivity	Human
Tested Applications	ELISA, WB, IHC, IP; Recommended dilution: WB:1:500-1:5000, IHC:1:20-1:200, IP:1:200-1:2000
Form	Liquid
Conjugate	Non-conjugated
Storage Buffer	Preservative: 0.03% Proclin 300 Constituents: 50% Glycerol, 0.01M PBS, pH 7.4
Purification Method	>95%, Protein G purified
Isotype	IgG
Clonality	Polyclonal
Alias	Serine protease HTRA2, mitochondrial (EC 3.4.21.108) (High temperature requirement protein A2) (HtrA2) (Omi stress-regulated endoprotease) (Serine protease 25) (Serine proteinase OMI), HTRA2, OMI PRSS25
Immunogen Species	Homo sapiens (Human)
Research Area	Neuroscience
Target Names	HTRA2

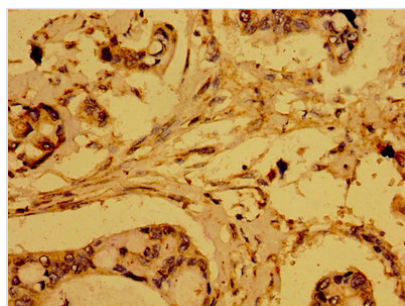
Image



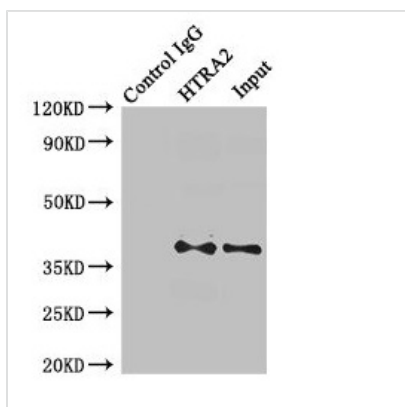
IHC image of CSB-PA010902EA01HU diluted at 1:200 and staining in paraffin-embedded human kidney tissue performed on a Leica Bond™ system. After dewaxing and hydration, antigen retrieval was mediated by high pressure in a citrate buffer (pH 6.0). Section was blocked with 10% normal goat serum 30min at RT. Then primary antibody (1% BSA) was incubated at 4°C overnight. The primary is detected by a biotinylated secondary antibody and visualized using an HRP conjugated SP system.



IHC image of CSB-PA010902EA01HU diluted at 1:200 and staining in paraffin-embedded human colon cancer performed on a Leica Bond™ system. After dewaxing and hydration, antigen retrieval was mediated by high pressure in a citrate buffer (pH 6.0). Section was blocked with 10% normal goat serum 30min at RT. Then primary antibody (1% BSA) was incubated at 4°C overnight. The primary is detected by a biotinylated secondary antibody and visualized using an HRP conjugated SP system.



Immunohistochemistry of paraffin-embedded human pancreatic cancer using CSB-PA010902EA01HU at dilution of 1:100



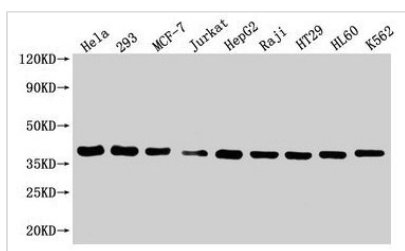
Immunoprecipitating HTRA2 in MCF-7 whole cell lysate

Lane 1: Rabbit control IgG (1µg) instead of CSB-PA010902EA01HU in MCF-7 whole cell lysate.

For western blotting, a HRP-conjugated Protein G antibody was used as the secondary antibody (1/2000)

Lane 2: CSB-PA010902EA01HU (8µg) + MCF-7 whole cell lysate (500µg)

Lane 3: MCF-7 whole cell lysate (20µg)



Western Blot

Positive WB detected in: HeLa whole cell lysate, HEK293 whole cell lysate, MCF-7 whole cell lysate, Jurkat whole cell lysate, HepG2 whole cell lysate, Raji whole cell lysate, HT29 whole cell lysate, HL60 whole cell lysate, K562 whole cell lysate

All lanes: HTRA2 antibody at 1:2000

Secondary

Goat polyclonal to rabbit IgG at 1/50000 dilution

Predicted band size: 39, 49, 47, 40 kDa

Observed band size: 39 kDa

Usage

For Research Use Only. Not for use in diagnostic or therapeutic procedures.