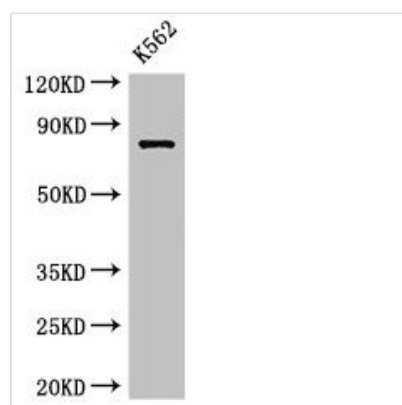




IL12RB1 Antibody

Product Code	CSB-PA011588LA01HU
Abbreviation	Interleukin-12 receptor subunit beta-1
Storage	Upon receipt, store at -20°C or -80°C. Avoid repeated freeze.
Uniprot No.	P42701
Immunogen	Recombinant Human Interleukin-12 receptor subunit beta-1 protein (119-280AA)
Raised In	Rabbit
Species Reactivity	Human
Tested Applications	ELISA, WB; Recommended dilution: WB:1:500-1:5000
Relevance	Functions as an interleukin receptor which binds interleukin-12 with low affinity and is involved in IL12 transduction. Associated with IL12RB2 it forms a functional, high affinity receptor for IL12. Associates also with IL23R to form the interleukin-23 receptor which functions in IL23 signal transduction probably through activation of the Jak-Stat signaling cascade.
Form	Liquid
Conjugate	Non-conjugated
Storage Buffer	Preservative: 0.03% Proclin 300 Constituents: 50% Glycerol, 0.01M PBS, pH 7.4
Purification Method	>95%, Protein G purified
Isotype	IgG
Clonality	Polyclonal
Alias	Interleukin-12 receptor subunit beta-1 (IL-12 receptor subunit beta-1) (IL-12R subunit beta-1) (IL-12R-beta-1) (IL-12RB1) (IL-12 receptor beta component) (CD antigen CD212), IL12RB1, IL12R IL12RB
Species	Human
Research Area	Immunology
Target Names	IL12RB1

Image



Western Blot

Positive WB detected in: K562 whole cell lysate

All lanes: IL12RB1 antibody at 3.5µg/ml

Secondary

Goat polyclonal to rabbit IgG at 1/50000 dilution

Predicted band size: 74, 73, 43 kDa

Observed band size: 74 kDa

