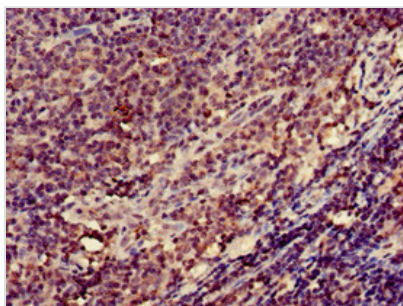




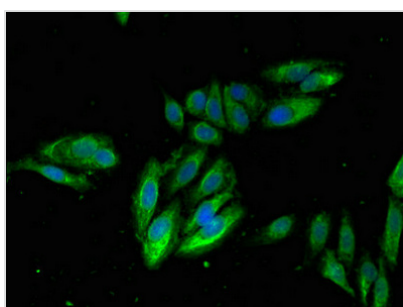
ITGB2 Antibody

Product Code	CSB-PA011884LA01HU
Storage	Upon receipt, store at -20°C or -80°C. Avoid repeated freeze.
Uniprot No.	P05107
Immunogen	Recombinant Human Integrin beta-2 protein (37-201AA)
Raised In	Rabbit
Species Reactivity	Human
Tested Applications	ELISA, IHC, IF; Recommended dilution: IHC:1:20-1:200, IF:1:50-1:200
Form	Liquid
Conjugate	Non-conjugated
Storage Buffer	Preservative: 0.03% Proclin 300 Constituents: 50% Glycerol, 0.01M PBS, pH 7.4
Purification Method	>95%, Protein G purified
Isotype	IgG
Clonality	Polyclonal
Alias	Integrin beta-2 (Cell surface adhesion glycoproteins LFA-1/CR3/p150,95 subunit beta) (Complement receptor C3 subunit beta) (CD antigen CD18), ITGB2, CD18 MFI7
Immunogen Species	Homo sapiens (Human)
Research Area	Signal Transduction
Target Names	ITGB2

Image



Immunohistochemistry of paraffin-embedded human lymph node tissue using CSB-PA011884LA01HU at dilution of 1:100



Immunofluorescent analysis of HeLa cells using CSB-PA011884LA01HU at dilution of 1:100 and Alexa Fluor 488-conjugated AffiniPure Goat Anti-Rabbit IgG(H+L)



Usage

For Research Use Only. Not for use in diagnostic or therapeutic procedures.