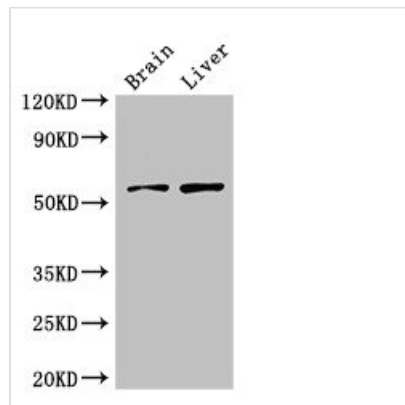




# KCNA1 Antibody

<b>Product Code</b>	CSB-PA012005LA01HU
<b>Storage</b>	Upon receipt, store at -20°C or -80°C. Avoid repeated freeze.
<b>Uniprot No.</b>	Q09470
<b>Immunogen</b>	Recombinant Human Potassium voltage-gated channel subfamily A member 1 protein (7-150AA)
<b>Raised In</b>	Rabbit
<b>Species Reactivity</b>	Human, Mouse, Rat
<b>Tested Applications</b>	ELISA, WB, IF; Recommended dilution: WB:1:500-1:5000, IF:1:50-1:200
<b>Form</b>	Liquid
<b>Conjugate</b>	Non-conjugated
<b>Storage Buffer</b>	Preservative: 0.03% Proclin 300 Constituents: 50% Glycerol, 0.01M PBS, pH 7.4
<b>Purification Method</b>	>95%, Protein G purified
<b>Isotype</b>	IgG
<b>Clonality</b>	Polyclonal
<b>Alias</b>	Potassium voltage-gated channel subfamily A member 1 (Voltage-gated K(+) channel HuK1) (Voltage-gated potassium channel HBK1) (Voltage-gated potassium channel subunit Kv1.1), KCNA1
<b>Immunogen Species</b>	Homo sapiens (Human)
<b>Research Area</b>	Neuroscience
<b>Target Names</b>	KCNA1

## Image



### Western Blot

Positive WB detected in: Mouse brain tissue, Rat liver tissue

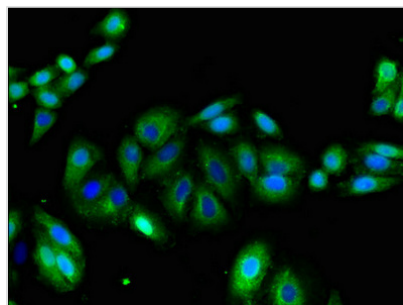
All lanes: KCNA1 antibody at 3μg/ml

Secondary

Goat polyclonal to rabbit IgG at 1/50000 dilution

Predicted band size: 57 kDa

Observed band size: 57 kDa



Immunofluorescent analysis of HepG2 cells using CSB-PA012005LA01HU at dilution of 1:100 and Alexa Fluor 488-conjugated AffiniPure Goat Anti-Rabbit IgG(H+L)