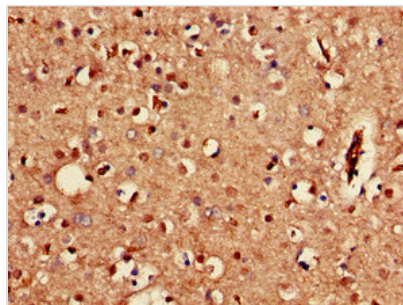




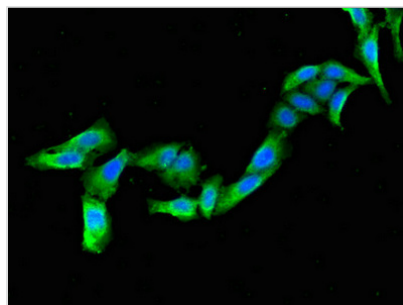
KCNJ3 Antibody

Product Code	CSB-PA012056LA01HU
Storage	Upon receipt, store at -20°C or -80°C. Avoid repeated freeze.
Uniprot No.	P48549
Immunogen	Recombinant Human G protein-activated inward rectifier potassium channel 1 protein (350-487AA)
Raised In	Rabbit
Species Reactivity	Human
Tested Applications	ELISA, IHC, IF; Recommended dilution: IHC:1:20-1:200, IF:1:50-1:200
Form	Liquid
Conjugate	Non-conjugated
Storage Buffer	Preservative: 0.03% Proclin 300 Constituents: 50% Glycerol, 0.01M PBS, pH 7.4
Purification Method	>95%, Protein G purified
Isotype	IgG
Clonality	Polyclonal
Alias	G protein-activated inward rectifier potassium channel 1 (GIRK-1) (Inward rectifier K(+) channel Kir3.1) (Potassium channel, inwardly rectifying subfamily J member 3), KCNJ3, GIRK1
Immunogen Species	Homo sapiens (Human)
Research Area	Neuroscience
Target Names	KCNJ3

Image



Immunohistochemistry of paraffin-embedded human brain tissue using CSB-PA012056LA01HU at dilution of 1:100



Immunofluorescent analysis of HeLa cells using CSB-PA012056LA01HU at dilution of 1:100 and Alexa Fluor 488-conjugated AffiniPure Goat Anti-Rabbit IgG(H+L)