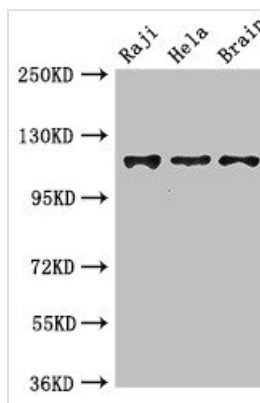




KIF11 Antibody

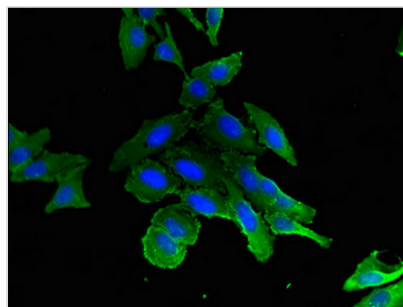
Product Code	CSB-PA012307LA01HU
Storage	Upon receipt, store at -20°C or -80°C. Avoid repeated freeze.
Uniprot No.	P52732
Immunogen	Recombinant Human Kinesin-like protein KIF11 protein (920-1038AA)
Raised In	Rabbit
Species Reactivity	Human, Mouse
Tested Applications	ELISA, WB, IF; Recommended dilution: WB:1:500-1:5000, IF:1:50-1:200
Form	Liquid
Conjugate	Non-conjugated
Storage Buffer	Preservative: 0.03% Proclin 300 Constituents: 50% Glycerol, 0.01M PBS, pH 7.4
Purification Method	>95%, Protein G purified
Isotype	IgG
Clonality	Polyclonal
Alias	Kinesin-like protein KIF11 (Kinesin-like protein 1) (Kinesin-like spindle protein HKSP) (Kinesin-related motor protein Eg5) (Thyroid receptor-interacting protein 5) (TR-interacting protein 5) (TRIP-5), KIF11, EG5 KNSL1 TRIP5
Immunogen Species	Homo sapiens (Human)
Research Area	Signal Transduction
Target Names	KIF11

Image



Western Blot

Positive WB detected in: Raji whole cell lysate, HeLa whole cell lysate, Mouse brain tissue
 All lanes: KIF11 antibody at 3.5µg/ml
 Secondary
 Goat polyclonal to rabbit IgG at 1/50000 dilution
 Predicted band size: 120 kDa
 Observed band size: 120 kDa



Immunofluorescent analysis of HeLa cells using CSB-PA012307LA01HU at dilution of 1:100 and Alexa Fluor 488-conjugated AffiniPure Goat Anti-Rabbit IgG(H+L)

Usage

For Research Use Only. Not for use in diagnostic or therapeutic procedures.