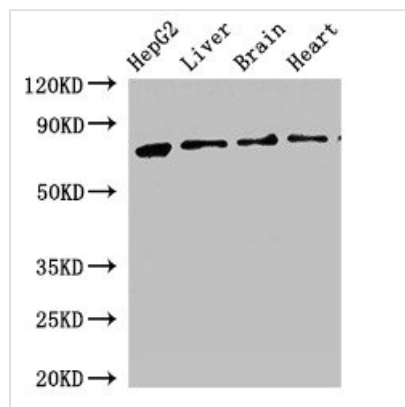




KLKB1 Antibody

Product Code	CSB-PA012461LA01HU
Storage	Upon receipt, store at -20°C or -80°C. Avoid repeated freeze.
Uniprot No.	P03952
Immunogen	Recombinant Human Plasma kallikrein protein (503-612AA)
Raised In	Rabbit
Species Reactivity	Human, Mouse, Rat
Tested Applications	ELISA, WB, IHC; Recommended dilution: WB:1:500-1:5000, IHC:1:20-1:200
Form	Liquid
Conjugate	Non-conjugated
Storage Buffer	Preservative: 0.03% Proclin 300 Constituents: 50% Glycerol, 0.01M PBS, pH 7.4
Purification Method	>95%, Protein G purified
Isotype	IgG
Clonality	Polyclonal
Alias	Plasma kallikrein (EC 3.4.21.34) (Fletcher factor) (Kininogenin) (Plasma prekallikrein) (PKK) [Cleaved into: Plasma kallikrein heavy chain; Plasma kallikrein light chain], KLKB1, KLK3
Immunogen Species	Homo sapiens (Human)
Research Area	Cardiovascular
Target Names	KLKB1

Image



Western Blot

Positive WB detected in: HepG2 whole cell lysate, Rat liver tissue, Rat brain tissue, Mouse heart tissue

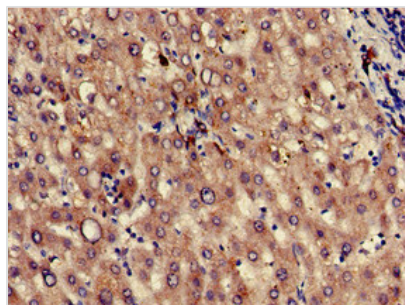
All lanes: KLKB1 antibody at 2.5µg/ml

Secondary

Goat polyclonal to rabbit IgG at 1/50000 dilution

Predicted band size: 72 kDa

Observed band size: 72 kDa



Immunohistochemistry of paraffin-embedded human liver tissue using CSB-PA012461LA01HU at dilution of 1:100