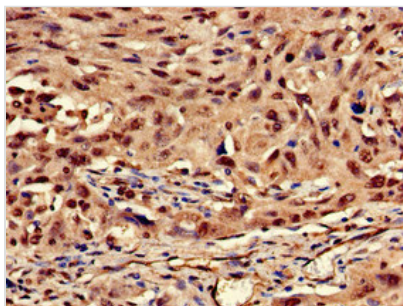




KRT13 Antibody

Product Code	CSB-PA012511LA01HU
Storage	Upon receipt, store at -20°C or -80°C. Avoid repeated freeze.
Uniprot No.	P13646
Immunogen	Recombinant Human Keratin, type I cytoskeletal 13 protein (420-458AA)
Raised In	Rabbit
Species Reactivity	Human
Tested Applications	ELISA, IHC; Recommended dilution: IHC:1:20-1:200
Form	Liquid
Conjugate	Non-conjugated
Storage Buffer	Preservative: 0.03% Proclin 300 Constituents: 50% Glycerol, 0.01M PBS, pH 7.4
Purification Method	>95%, Protein G purified
Isotype	IgG
Clonality	Polyclonal
Alias	Keratin, type I cytoskeletal 13 (Cytokeratin-13) (CK-13) (Keratin-13) (K13), KRT13
Immunogen Species	Homo sapiens (Human)
Research Area	Tags & Cell Markers
Target Names	KRT13

Image



Immunohistochemistry of paraffin-embedded human lung cancer using CSB-PA012511LA01HU at dilution of 1:100

Usage

For Research Use Only. Not for use in diagnostic or therapeutic procedures.