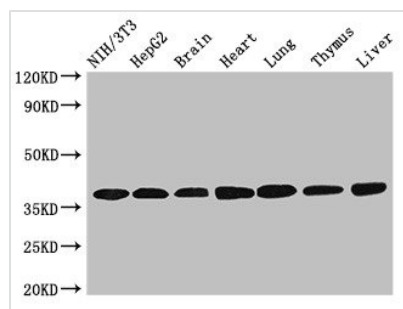




LDHC Antibody

Product Code	CSB-PA012844LA01HU
Storage	Upon receipt, store at -20°C or -80°C. Avoid repeated freeze.
Uniprot No.	P07864
Immunogen	Recombinant Human L-lactate dehydrogenase C chain protein (2-332AA)
Raised In	Rabbit
Species Reactivity	Human, Mouse, Rat
Tested Applications	ELISA, WB, IHC, IF; Recommended dilution: WB:1:500-1:5000, IHC:1:20-1:200, IF:1:50-1:200
Form	Liquid
Conjugate	Non-conjugated
Storage Buffer	Preservative: 0.03% Proclin 300 Constituents: 50% Glycerol, 0.01M PBS, pH 7.4
Purification Method	>95%, Protein G purified
Isotype	IgG
Clonality	Polyclonal
Alias	L-lactate dehydrogenase C chain (LDH-C) (EC 1.1.1.27) (Cancer/testis antigen 32) (CT32) (LDH testis subunit) (LDH-X), LDHC, LDH3 LDHX
Immunogen Species	Homo sapiens (Human)
Research Area	Signal Transduction
Target Names	LDHC

Image



Western Blot

Positive WB detected in: NIH/3T3 whole cell lysate, HepG2 whole cell lysate, Mouse brain tissue, Mouse heart tissue, Mouse lung tissue, Mouse thymus tissue, Rat liver tissue

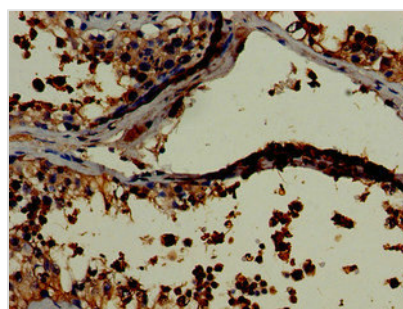
All lanes: LDHC antibody at 3.2µg/ml

Secondary

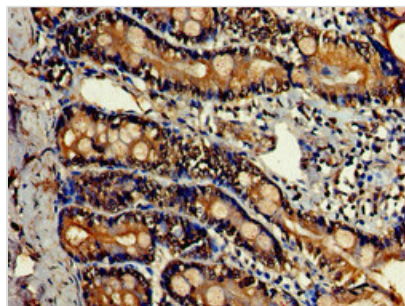
Goat polyclonal to rabbit IgG at 1/50000 dilution

Predicted band size: 37 kDa

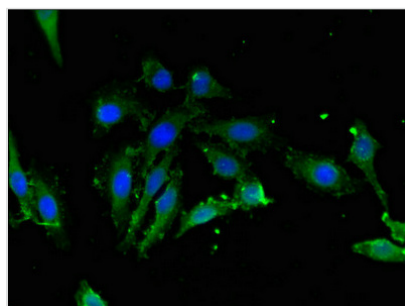
Observed band size: 37 kDa



Immunohistochemistry of paraffin-embedded human testis tissue using CSB-PA012844LA01HU at dilution of 1:100



Immunohistochemistry of paraffin-embedded human small intestine tissue using CSB-PA012844LA01HU at dilution of 1:100



Immunofluorescent analysis of HeLa cells using CSB-PA012844LA01HU at dilution of 1:100 and Alexa Fluor 488-conjugated AffiniPure Goat Anti-Rabbit IgG(H+L)