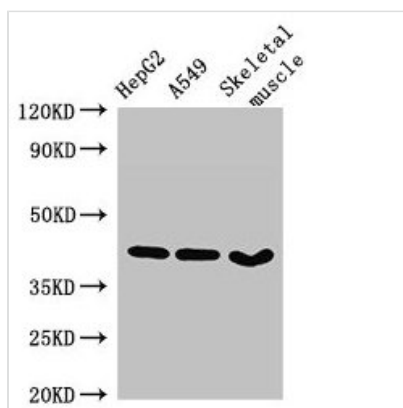




# MAPK12 Antibody

<b>Product Code</b>	CSB-PA013451LA01HU
<b>Storage</b>	Upon receipt, store at -20°C or -80°C. Avoid repeated freeze.
<b>Uniprot No.</b>	P53778
<b>Immunogen</b>	Recombinant Human Mitogen-activated protein kinase 12 protein (314-367AA)
<b>Raised In</b>	Rabbit
<b>Species Reactivity</b>	Human, Mouse
<b>Tested Applications</b>	ELISA, WB, IHC, IF; Recommended dilution: WB:1:500-1:5000, IHC:1:20-1:200, IF:1:50-1:200
<b>Form</b>	Liquid
<b>Conjugate</b>	Non-conjugated
<b>Storage Buffer</b>	Preservative: 0.03% Proclin 300 Constituents: 50% Glycerol, 0.01M PBS, pH 7.4
<b>Purification Method</b>	>95%, Protein G purified
<b>Isotype</b>	IgG
<b>Clonality</b>	Polyclonal
<b>Alias</b>	Mitogen-activated protein kinase 12 (MAP kinase 12) (MAPK 12) (EC 2.7.11.24) (Extracellular signal-regulated kinase 6) (ERK-6) (Mitogen-activated protein kinase p38 gamma) (MAP kinase p38 gamma) (Stress-activated protein kinase 3), MAPK12, ERK6 SAPK3
<b>Immunogen Species</b>	Homo sapiens (Human)
<b>Research Area</b>	Cell Biology
<b>Target Names</b>	MAPK12

## Image



### Western Blot

Positive WB detected in: HepG2 whole cell lysate, A549 whole cell lysate, Mouse skeletal muscle tissue

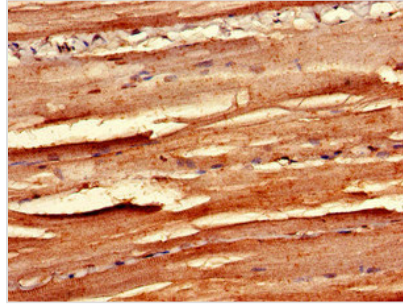
All lanes: MAPK12 antibody at 2.7µg/ml

Secondary

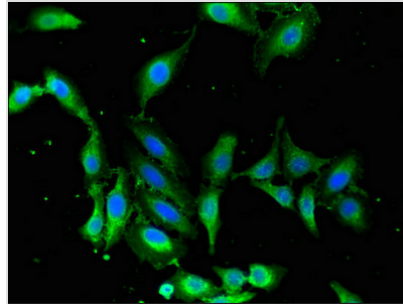
Goat polyclonal to rabbit IgG at 1/50000 dilution

Predicted band size: 42, 41 kDa

Observed band size: 42 kDa



Immunohistochemistry of paraffin-embedded human skeletal muscle tissue using CSB-PA013451LA01HU at dilution of 1:100



Immunofluorescent analysis of HeLa cells using CSB-PA013451LA01HU at dilution of 1:100 and Alexa Fluor 488-conjugated AffiniPure Goat Anti-Rabbit IgG(H+L)

## Usage

For Research Use Only. Not for use in diagnostic or therapeutic procedures.