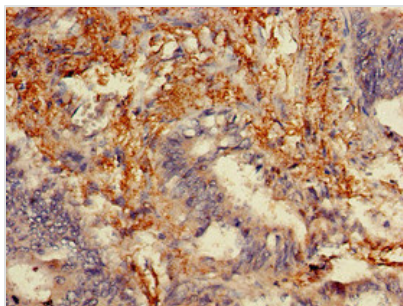




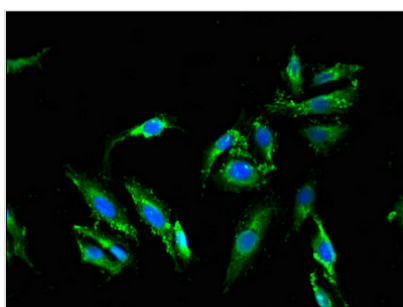
MLPH Antibody

Product Code	CSB-PA014640LA01HU
Storage	Upon receipt, store at -20°C or -80°C. Avoid repeated freeze.
Uniprot No.	Q9BV36
Immunogen	Recombinant Human Melanophilin protein (310-539AA)
Raised In	Rabbit
Species Reactivity	Human, Mouse
Tested Applications	ELISA, WB, IHC, IF; Recommended dilution: WB:1:500-1:5000, IHC:1:20-1:200, IF:1:50-1:200
Form	Liquid
Conjugate	Non-conjugated
Storage Buffer	Preservative: 0.03% Proclin 300 Constituents: 50% Glycerol, 0.01M PBS, pH 7.4
Purification Method	>95%, Protein G purified
Isotype	IgG
Clonality	Polyclonal
Alias	Melanophilin (Exophilin-3) (Slp homolog lacking C2 domains a) (SlaC2-a) (Synaptotagmin-like protein 2a), MLPH, SLAC2A
Immunogen Species	Homo sapiens (Human)
Research Area	Neuroscience
Target Names	MLPH

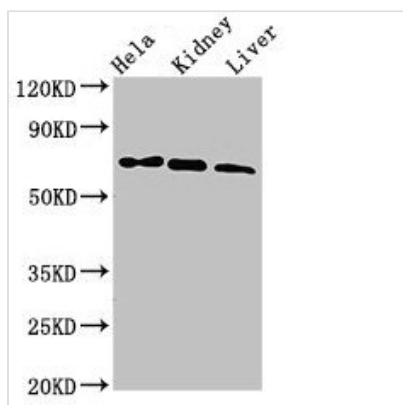
Image



Immunohistochemistry of paraffin-embedded human colon cancer using CSB-PA014640LA01HU at dilution of 1:100



Immunofluorescent analysis of HeLa cells using CSB-PA014640LA01HU at dilution of 1:100 and Alexa Fluor 488-conjugated AffiniPure Goat Anti-Rabbit IgG(H+L)

**Western Blot**

Positive WB detected in: HeLa whole cell lysate,
Mouse kidney tissue, Mouse liver tissue

All lanes: MLPH antibody at 3 μ g/ml

Secondary

Goat polyclonal to rabbit IgG at 1/50000 dilution

Predicted band size: 66, 63, 53, 61, 51 kDa

Observed band size: 66 kDa

Usage

For Research Use Only. Not for use in diagnostic or therapeutic procedures.