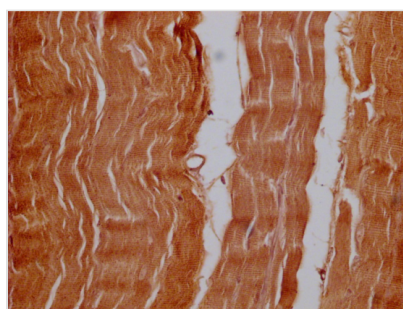




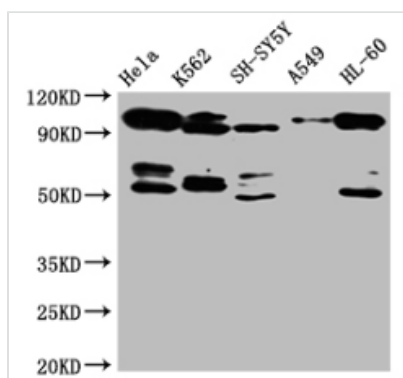
OFD1 Antibody

Product Code	CSB-PA016289LA01HU
Storage	Upon receipt, store at -20°C or -80°C. Avoid repeated freeze.
Uniprot No.	O75665
Immunogen	Recombinant Human Oral-facial-digital syndrome 1 protein
Raised In	Rabbit
Species Reactivity	Human
Tested Applications	ELISA, WB, IHC; Recommended dilution: WB:1:500-1:5000, IHC:1:20-1:200
Form	Liquid
Conjugate	Non-conjugated
Storage Buffer	PBS with 0.02% sodium azide and 50% glycerol pH 7.3.
Purification Method	Antigen affinity purification
Isotype	IgG
Clonality	Polyclonal
Product Type	Polyclonal Antibody
Immunogen Species	Homo sapiens (Human)
Research Area	Tags & Cell Markers
Target Names	OFD1

Image



IHC image of CSB-PA016289LA01HU diluted at 1:100 and staining in paraffin-embedded human skeletal muscle tissue performed on a Leica BondTM system. After dewaxing and hydration, antigen retrieval was mediated by high pressure in a citrate buffer (pH 6.0). Section was blocked with 10% normal goat serum 30min at 37°. Then primary antibody (1% BSA) was incubated at 4°C overnight. The primary is detected by a Goat anti-Mouse IgG labeled by HRP and visualized using 0.05% DAB.



Western Blot

Positive WB detected in: HeLa whole cell lysate, K562 whole cell lysate, SH-SY5Y whole cell lysate, A549 whole cell lysate, HL-60 whole cell lysate

All lanes: OFD1 antibody at 1:1000

Secondary

Goat polyclonal to rabbit IgG at 1/50000 dilution

Predicted band size: 117,112,43 KDa

Observed band size: 117 KDa

Exposure time?5min



Usage

For Research Use Only. Not for use in diagnostic or therapeutic procedures.