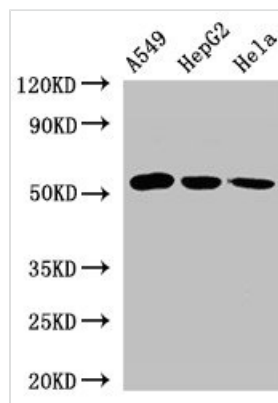




ONECUT2 Antibody

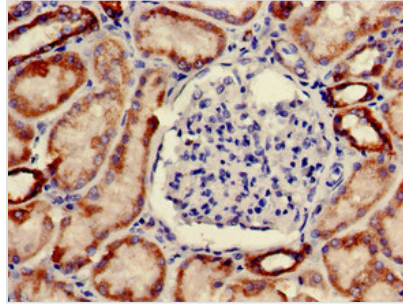
Product Code	CSB-PA016337LA01HU
Storage	Upon receipt, store at -20°C or -80°C. Avoid repeated freeze.
Uniprot No.	O95948
Immunogen	Recombinant Human One cut domain family member 2 protein (214-331AA)
Raised In	Rabbit
Species Reactivity	Human
Tested Applications	ELISA, WB, IHC; Recommended dilution: WB:1:500-1:5000, IHC:1:20-1:200
Form	Liquid
Conjugate	Non-conjugated
Storage Buffer	Preservative: 0.03% Proclin 300 Constituents: 50% Glycerol, 0.01M PBS, pH 7.4
Purification Method	>95%, Protein G purified
Isotype	IgG
Clonality	Polyclonal
Alias	One cut domain family member 2 (Hepatocyte nuclear factor 6-beta) (HNF-6-beta) (One cut homeobox 2) (Transcription factor ONECUT-2) (OC-2), ONECUT2, HNF6B
Immunogen Species	Homo sapiens (Human)
Research Area	Epigenetics and Nuclear Signaling
Target Names	ONECUT2

Image



Western Blot

Positive WB detected in: A549 whole cell lysate, HepG2 whole cell lysate, HeLa whole cell lysate
 All lanes: ONECUT2 antibody at 2.4µg/ml
 Secondary
 Goat polyclonal to rabbit IgG at 1/50000 dilution
 Predicted band size: 55 kDa
 Observed band size: 55 kDa



Immunohistochemistry of paraffin-embedded human kidney tissue using CSB-PA016337LA01HU at dilution of 1:100

Usage

For Research Use Only. Not for use in diagnostic or therapeutic procedures.