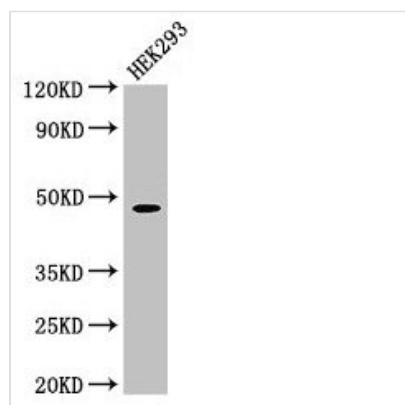




# PEPD Antibody

<b>Product Code</b>	CSB-PA017784LA01HU
<b>Storage</b>	Upon receipt, store at -20°C or -80°C. Avoid repeated freeze.
<b>Uniprot No.</b>	P12955
<b>Immunogen</b>	Recombinant Human Xaa-Pro dipeptidase protein (258-395AA)
<b>Raised In</b>	Rabbit
<b>Species Reactivity</b>	Human
<b>Tested Applications</b>	ELISA, WB, IHC; Recommended dilution: WB:1:500-1:5000, IHC:1:20-1:200
<b>Form</b>	Liquid
<b>Conjugate</b>	Non-conjugated
<b>Storage Buffer</b>	Preservative: 0.03% Proclin 300 Constituents: 50% Glycerol, 0.01M PBS, pH 7.4
<b>Purification Method</b>	>95%, Protein G purified
<b>Isotype</b>	IgG
<b>Clonality</b>	Polyclonal
<b>Alias</b>	Xaa-Pro dipeptidase (X-Pro dipeptidase) (EC 3.4.13.9) (Imidodipeptidase) (Peptidase D) (Proline dipeptidase) (Prolidase), PEPD, PRD
<b>Immunogen Species</b>	Homo sapiens (Human)
<b>Research Area</b>	Signal Transduction
<b>Target Names</b>	PEPD

## Image



### Western Blot

Positive WB detected in: HEK293 whole cell lysate

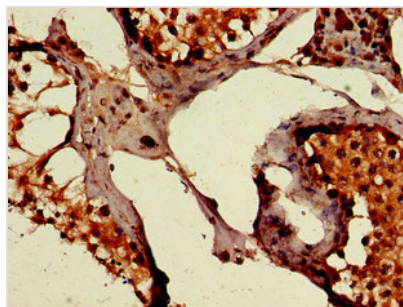
All lanes: PEPD antibody at 1.5µg/ml

Secondary

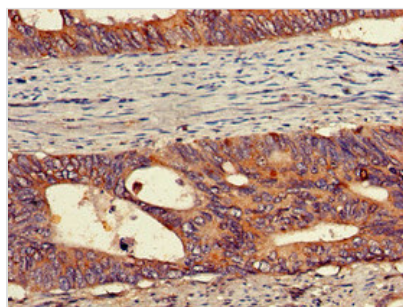
Goat polyclonal to rabbit IgG at 1/50000 dilution

Predicted band size: 55, 50, 48 kDa

Observed band size: 48 kDa



Immunohistochemistry of paraffin-embedded human testis tissue using CSB-PA017784LA01HU at dilution of 1:100



Immunohistochemistry of paraffin-embedded human colon cancer using CSB-PA017784LA01HU at dilution of 1:100