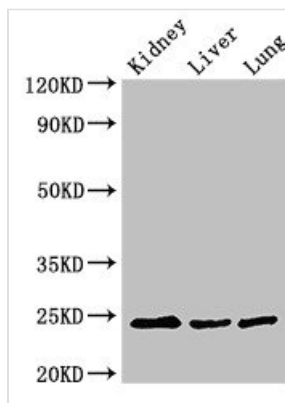




RAB5A Antibody

Product Code	CSB-PA019213EA01HU
Storage	Upon receipt, store at -20°C or -80°C. Avoid repeated freeze.
Uniprot No.	P20339
Immunogen	Recombinant Human Ras-related protein Rab-5A protein (1-215AA)
Raised In	Rabbit
Species Reactivity	Human, Mouse, Rat
Tested Applications	ELISA, WB, IHC, IF; Recommended dilution: WB:1:500-1:5000, IHC:1:20-1:200, IF:1:50-1:200
Form	Liquid
Conjugate	Non-conjugated
Storage Buffer	Preservative: 0.03% Proclin 300 Constituents: 50% Glycerol, 0.01M PBS, pH 7.4
Purification Method	>95%, Protein G purified
Isotype	IgG
Clonality	Polyclonal
Alias	Ras-related protein Rab-5A, RAB5A, RAB5
Immunogen Species	Homo sapiens (Human)
Research Area	Neuroscience
Target Names	RAB5A

Image



Western Blot

Positive WB detected in: Mouse kidney tissue, Mouse liver tissue, Rat lung tissue

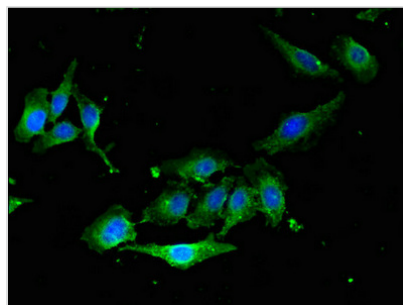
All lanes: RAB5A antibody at 3µg/ml

Secondary

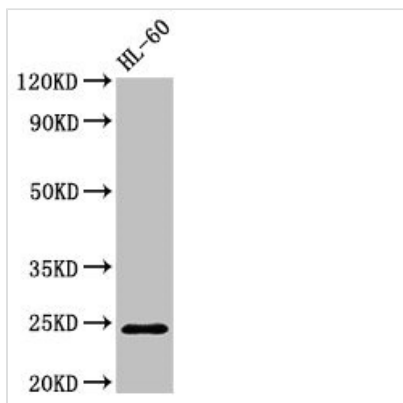
Goat polyclonal to rabbit IgG at 1/50000 dilution

Predicted band size: 24, 23 kDa

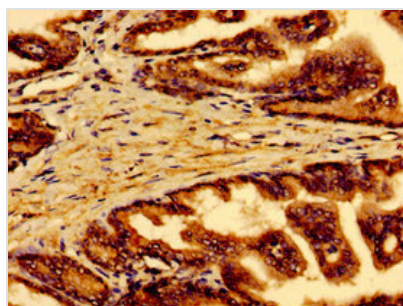
Observed band size: 24 kDa



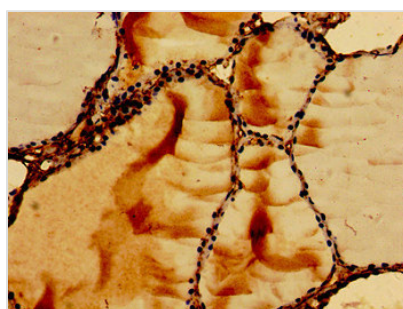
Immunofluorescent analysis of HeLa cells using CSB-PA019213EA01HU at dilution of 1: 100 and Alexa Fluor 488-conjugated AffiniPure Goat Anti-Rabbit IgG(H+L)



Western Blot
 Positive WB detected in: HL60 whole cell lysate
 All lanes: RAB5A antibody at 2.7µg/ml
 Secondary
 Goat polyclonal to rabbit IgG at 1/50000 dilution
 Predicted band size: 24, 23 kDa
 Observed band size: 24 kDa



Immunohistochemistry of paraffin-embedded human prostate tissue using CSB-PA019213EA01HU at dilution of 1:100



Immunohistochemistry of paraffin-embedded human thyroid tissue using CSB-PA019213EA01HU at dilution of 1:100

Usage

For Research Use Only. Not for use in diagnostic or therapeutic procedures.