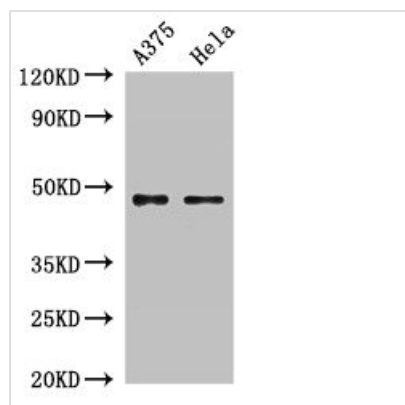




RPL4 Antibody

Product Code	CSB-PA020289LA01HU
Storage	Upon receipt, store at -20°C or -80°C. Avoid repeated freeze.
Uniprot No.	P36578
Immunogen	Recombinant Human 60S ribosomal protein L4 protein (12-91AA)
Raised In	Rabbit
Species Reactivity	Human
Tested Applications	ELISA, WB, IHC, IF; Recommended dilution: WB:1:500-1:5000, IHC:1:20-1:200, IF:1:50-1:200
Form	Liquid
Conjugate	Non-conjugated
Storage Buffer	Preservative: 0.03% Proclin 300 Constituents: 50% Glycerol, 0.01M PBS, pH 7.4
Purification Method	>95%, Protein G purified
Isotype	IgG
Clonality	Polyclonal
Alias	60S ribosomal protein L4 (60S ribosomal protein L1) (Large ribosomal subunit protein uL4), RPL4, RPL1
Immunogen Species	Homo sapiens (Human)
Research Area	Others
Target Names	RPL4

Image



Western Blot

Positive WB detected in: A375 whole cell lysate, HeLa whole cell lysate

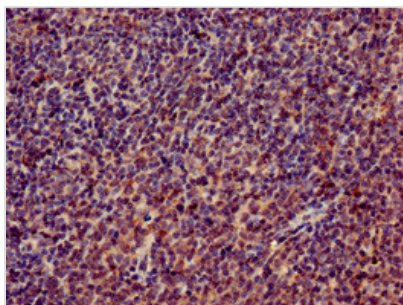
All lanes: RPL4 antibody at 2µg/ml

Secondary

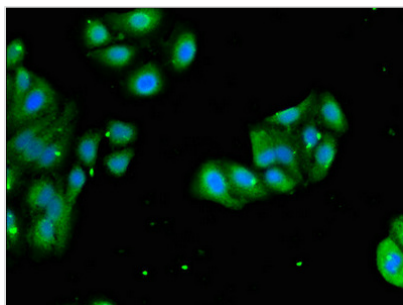
Goat polyclonal to rabbit IgG at 1/50000 dilution

Predicted band size: 48 kDa

Observed band size: 48 kDa



Immunohistochemistry of paraffin-embedded human lymph node tissue using CSB-PA020289LA01HU at dilution of 1:100



Immunofluorescent analysis of HepG2 cells using CSB-PA020289LA01HU at dilution of 1:100 and Alexa Fluor 488-conjugated AffiniPure Goat Anti-Rabbit IgG(H+L)