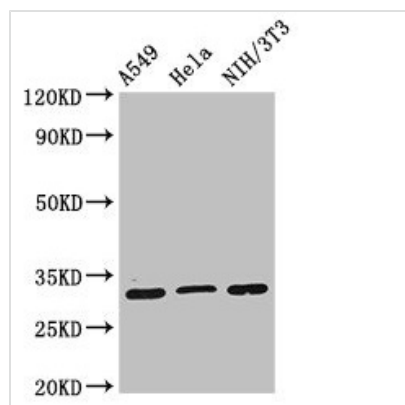




# RPS2 Antibody

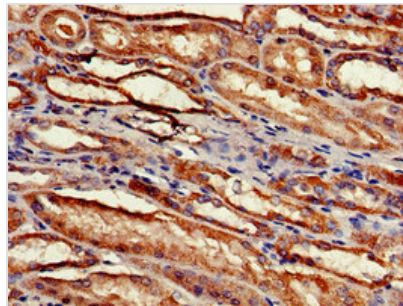
<b>Product Code</b>	CSB-PA020393LA01HU
<b>Storage</b>	Upon receipt, store at -20°C or -80°C. Avoid repeated freeze.
<b>Uniprot No.</b>	P15880
<b>Immunogen</b>	Recombinant Human 40S ribosomal protein S2 protein (2-61AA)
<b>Raised In</b>	Rabbit
<b>Species Reactivity</b>	Human, Mouse
<b>Tested Applications</b>	ELISA, WB, IHC, IF; Recommended dilution: WB:1:500-1:5000, IHC:1:20-1:200, IF:1:50-1:200
<b>Form</b>	Liquid
<b>Conjugate</b>	Non-conjugated
<b>Storage Buffer</b>	Preservative: 0.03% Proclin 300 Constituents: 50% Glycerol, 0.01M PBS, pH 7.4
<b>Purification Method</b>	>95%, Protein G purified
<b>Isotype</b>	IgG
<b>Clonality</b>	Polyclonal
<b>Alias</b>	40S ribosomal protein S2 (40S ribosomal protein S4) (Protein LLRep3) (Small ribosomal subunit protein uS5), RPS2, RPS4
<b>Immunogen Species</b>	Homo sapiens (Human)
<b>Research Area</b>	Immunology
<b>Target Names</b>	RPS2

## Image

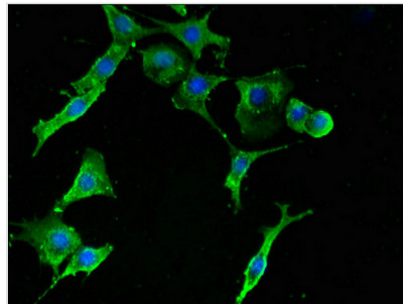


### Western Blot

Positive WB detected in: A549 whole cell lysate, HeLa whole cell lysate, NIH/3T3 whole cell lysate  
All lanes: RPS2 antibody at 2µg/ml  
Secondary  
Goat polyclonal to rabbit IgG at 1/50000 dilution  
Predicted band size: 32 kDa  
Observed band size: 32 kDa



Immunohistochemistry of paraffin-embedded human kidney tissue using CSB-PA020393LA01HU at dilution of 1:100



Immunofluorescent analysis of MCF-7 cells using CSB-PA020393LA01HU at dilution of 1:100 and Alexa Fluor 488-conjugated AffiniPure Goat Anti-Rabbit IgG(H+L)