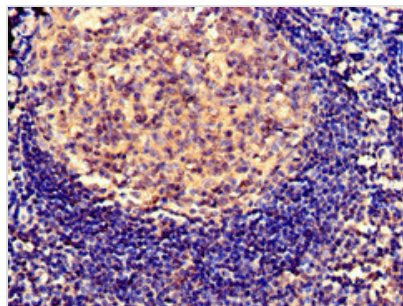




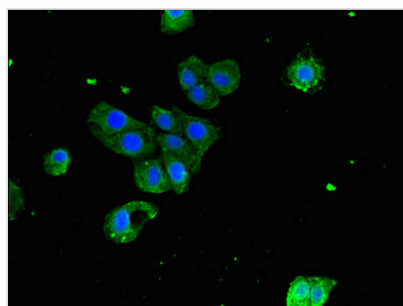
SERPING1 Antibody

Product Code	CSB-PA021086LA01HU
Storage	Upon receipt, store at -20°C or -80°C. Avoid repeated freeze.
Uniprot No.	P05155
Immunogen	Recombinant Human Plasma protease C1 inhibitor protein (23-300AA)
Raised In	Rabbit
Species Reactivity	Human, Rat
Tested Applications	ELISA, WB, IHC, IF; Recommended dilution: WB:1:200-1:5000, IHC:1:20-1:200, IF:1:50-1:200
Form	Liquid
Conjugate	Non-conjugated
Storage Buffer	Preservative: 0.03% Proclin 300 Constituents: 50% Glycerol, 0.01M PBS, pH 7.4
Purification Method	>95%, Protein G purified
Isotype	IgG
Clonality	Polyclonal
Alias	Plasma protease C1 inhibitor (C1 Inh) (C1Inh) (C1 esterase inhibitor) (C1-inhibiting factor) (Serp1n G1), SERPING1, C1IN C1NH
Immunogen Species	Homo sapiens (Human)
Research Area	Cardiovascular
Target Names	SERPING1

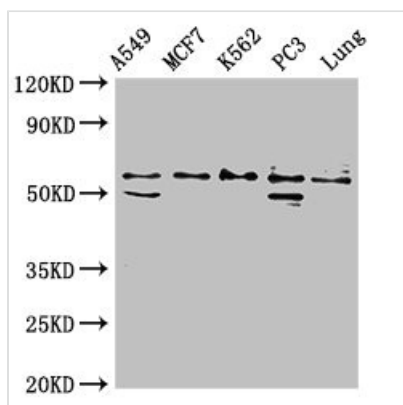
Image



Immunohistochemistry of paraffin-embedded human tonsil tissue using CSB-PA021086LA01HU at dilution of 1:100



Immunofluorescent analysis of HepG2 cells using CSB-PA021086LA01HU at dilution of 1:100 and Alexa Fluor 488-conjugated AffiniPure Goat Anti-Rabbit IgG(H+L)



Western Blot

Positive WB detected in: A549 whole cell lysate, MCF-7 whole cell lysate, K562 whole cell lysate, PC-3 whole cell lysate, Rat lung tissue

All lanes: SERPING1 antibody at 2 μ g/ml

Secondary

Goat polyclonal to rabbit IgG at 1/50000 dilution

Predicted band size: 56, 50 kDa

Observed band size: 56 kDa