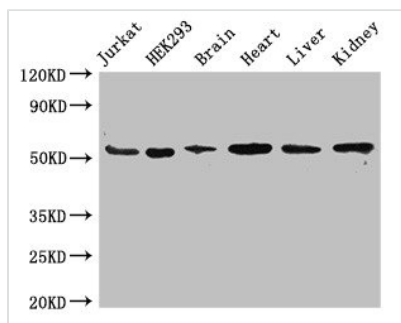




SLC18A2 Antibody

Product Code	CSB-PA021427LA01HU
Storage	Upon receipt, store at -20°C or -80°C. Avoid repeated freeze.
Uniprot No.	Q05940
Immunogen	Recombinant Human Synaptic vesicular amine transporter protein (463-514AA)
Raised In	Rabbit
Species Reactivity	Human, Mouse
Tested Applications	ELISA, WB, IF; Recommended dilution: WB:1:500-1:5000, IF:1:50-1:200
Form	Liquid
Conjugate	Non-conjugated
Storage Buffer	Preservative: 0.03% Proclin 300 Constituents: 50% Glycerol, 0.01M PBS, pH 7.4
Purification Method	>95%, Protein G purified
Isotype	IgG
Clonality	Polyclonal
Alias	Synaptic vesicular amine transporter (Monoamine transporter) (Solute carrier family 18 member 2) (Vesicular amine transporter 2) (VAT2), SLC18A2, SVMT VMAT2
Immunogen Species	Homo sapiens (Human)
Research Area	Neuroscience
Target Names	SLC18A2

Image



Western Blot

Positive WB detected in: Jurkat whole cell lysate, HEK293 whole cell lysate, Mouse brain tissue, Mouse heart tissue, Mouse liver tissue, Mouse kidney tissue

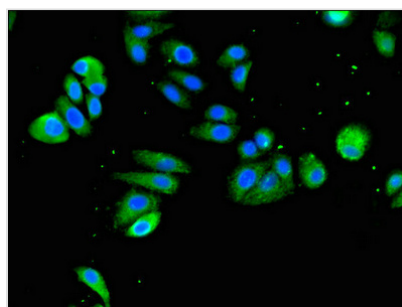
All lanes: SLC18A2 antibody at 3.4µg/ml

Secondary

Goat polyclonal to rabbit IgG at 1/50000 dilution

Predicted band size: 56, 23 kDa

Observed band size: 56 kDa



Immunofluorescent analysis of HepG2 cells using CSB-PA021427LA01HU at dilution of 1:100 and Alexa Fluor 488-conjugated AffiniPure Goat Anti-Rabbit IgG(H+L)



Usage

For Research Use Only. Not for use in diagnostic or therapeutic procedures.