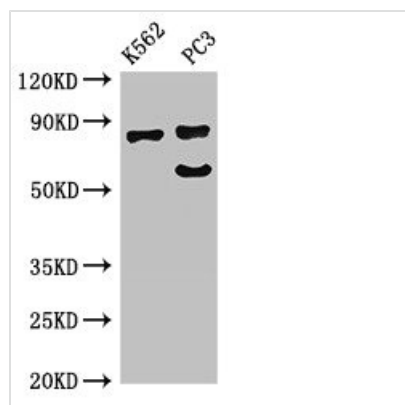




SP110 Antibody

Product Code	CSB-PA022440LA01HU
Storage	Upon receipt, store at -20°C or -80°C. Avoid repeated freeze.
Uniprot No.	Q9HB58
Immunogen	Recombinant Human Sp110 nuclear body protein (137-386AA)
Raised In	Rabbit
Species Reactivity	Human
Tested Applications	ELISA, WB, IHC, IF; Recommended dilution: WB:1:500-1:5000, IHC:1:20-1:200, IF:1:50-1:200
Form	Liquid
Conjugate	Non-conjugated
Storage Buffer	Preservative: 0.03% Proclin 300 Constituents: 50% Glycerol, 0.01M PBS, pH 7.4
Purification Method	>95%, Protein G purified
Isotype	IgG
Clonality	Polyclonal
Alias	Sp110 nuclear body protein (Interferon-induced protein 41/75) (Speckled 110 kDa) (Transcriptional coactivator Sp110), SP110
Immunogen Species	Homo sapiens (Human)
Research Area	Epigenetics and Nuclear Signaling
Target Names	SP110

Image



Western Blot

Positive WB detected in: K562 whole cell lysate, PC-3 whole cell lysate

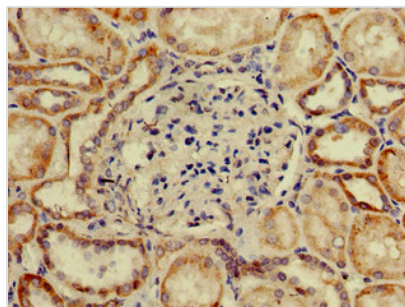
All lanes: SP110 antibody at 2.7µg/ml

Secondary

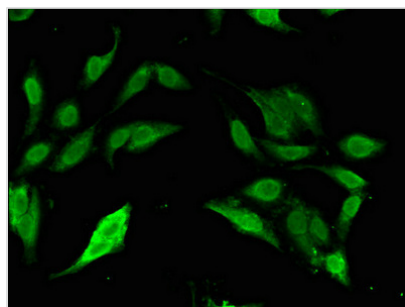
Goat polyclonal to rabbit IgG at 1/50000 dilution

Predicted band size: 79, 47, 62, 29, 82, 63 kDa

Observed band size: 79, 64 kDa



Immunohistochemistry of paraffin-embedded human kidney tissue using CSB-PA022440LA01HU at dilution of 1:100



Immunofluorescent analysis of HeLa cells using CSB-PA022440LA01HU at dilution of 1:100 and Alexa Fluor 488-conjugated AffiniPure Goat Anti-Rabbit IgG(H+L)

Usage

For Research Use Only. Not for use in diagnostic or therapeutic procedures.