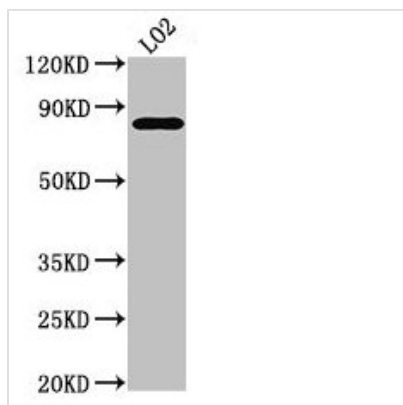




# XRCC5 Antibody

<b>Product Code</b>	CSB-PA026233HA01HU
<b>Storage</b>	Upon receipt, store at -20°C or -80°C. Avoid repeated freeze.
<b>Uniprot No.</b>	P13010
<b>Immunogen</b>	Recombinant Human X-ray repair cross-complementing protein 5 protein (251-455AA)
<b>Raised In</b>	Rabbit
<b>Species Reactivity</b>	Human
<b>Tested Applications</b>	ELISA, WB, IHC, IP; Recommended dilution: WB:1:500-1:5000, IHC:1:20-1:200, IP:1:200-1:2000
<b>Form</b>	Liquid
<b>Conjugate</b>	Non-conjugated
<b>Storage Buffer</b>	Preservative: 0.03% Proclin 300 Constituents: 50% Glycerol, 0.01M PBS, pH 7.4
<b>Purification Method</b>	>95%, Protein G purified
<b>Isotype</b>	IgG
<b>Clonality</b>	Polyclonal
<b>Alias</b>	X-ray repair cross-complementing protein 5 (EC 3.6.4.-) (86 kDa subunit of Ku antigen) (ATP-dependent DNA helicase 2 subunit 2) (ATP-dependent DNA helicase II 80 kDa subunit) (CTC box-binding factor 85 kDa subunit) (CTC85) (CTCBF) (DNA repair protein XRCC5) (Ku80) (Ku86) (Lupus Ku autoantigen protein p86) (Nuclear factor IV) (Thyroid-lupus autoantigen) (TLAA) (X-ray repair complementing defective repair in Chinese hamster cells 5 (double-strand-break rejoining)), XRCC5, G22P2
<b>Immunogen Species</b>	Homo sapiens (Human)
<b>Research Area</b>	Epigenetics and Nuclear Signaling
<b>Target Names</b>	XRCC5

## Image



### Western Blot

Positive WB detected in: LO2 whole cell lysate

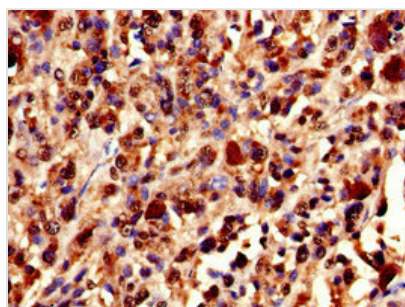
All lanes: XRCC5 antibody at 3.5µg/ml

Secondary

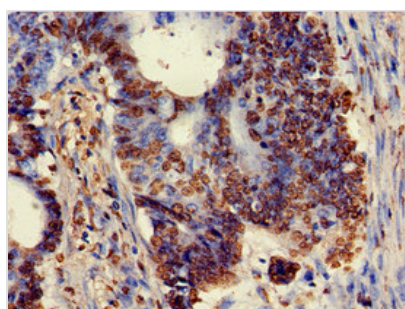
Goat polyclonal to rabbit IgG at 1/50000 dilution

Predicted band size: 83 kDa

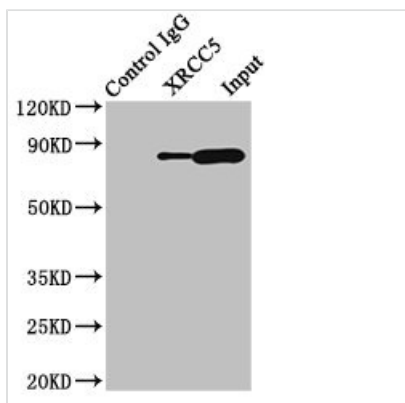
Observed band size: 83 kDa



Immunohistochemistry of paraffin-embedded human melanoma using CSB-PA026233HA01HU at dilution of 1:100



Immunohistochemistry of paraffin-embedded human colon cancer using CSB-PA026233HA01HU at dilution of 1:100



Immunoprecipitating XRCC5 in HepG2 whole cell lysate  
 Lane 1: Rabbit control IgG (1 $\mu$ g) instead of CSB-PA026233HA01HU in HepG2 whole cell lysate. For western blotting, a HRP-conjugated Protein G antibody was used as the secondary antibody (1/2000)  
 Lane 2: CSB-PA026233HA01HU (8 $\mu$ g) + HepG2 whole cell lysate (500 $\mu$ g)  
 Lane 3: HepG2 whole cell lysate (10 $\mu$ g)

**Usage**

For Research Use Only. Not for use in diagnostic or therapeutic procedures.