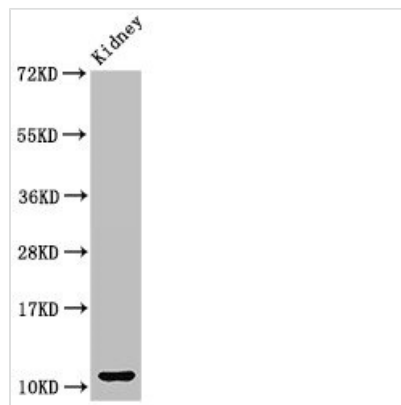




# CCL3 Antibody

<b>Product Code</b>	CSB-PA05939A0Rb
<b>Storage</b>	Upon receipt, store at -20°C or -80°C. Avoid repeated freeze.
<b>Uniprot No.</b>	P10147
<b>Immunogen</b>	Recombinant Human C-C motif chemokine 3 protein (25-81AA)
<b>Raised In</b>	Rabbit
<b>Species Reactivity</b>	Human, Mouse
<b>Tested Applications</b>	ELISA, WB, IHC; Recommended dilution: WB:1:500-1:5000, IHC:1:20-1:200
<b>Form</b>	Liquid
<b>Conjugate</b>	Non-conjugated
<b>Storage Buffer</b>	Preservative: 0.03% Proclin 300 Constituents: 50% Glycerol, 0.01M PBS, pH 7.4
<b>Purification Method</b>	>95%, Protein G purified
<b>Isotype</b>	IgG
<b>Clonality</b>	Polyclonal
<b>Alias</b>	C-C motif chemokine 3 (G0/G1 switch regulatory protein 19-1) (Macrophage inflammatory protein 1-alpha) (MIP-1-alpha) (PAT 464.1) (SIS-beta) (Small-inducible cytokine A3) (Tonsillar lymphocyte LD78 alpha protein) [Cleaved into: MIP-1-alpha(4-69) (LD78-alpha(4-69))], CCL3, G0S19-1 MIP1A SCYA3
<b>Immunogen Species</b>	Homo sapiens (Human)
<b>Research Area</b>	Immunology
<b>Target Names</b>	CCL3

## Image



### Western Blot

Positive WB detected in: Mouse kidney tissue

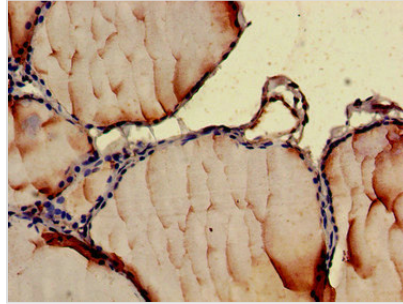
All lanes: CCL3 antibody at 3µg/ml

Secondary

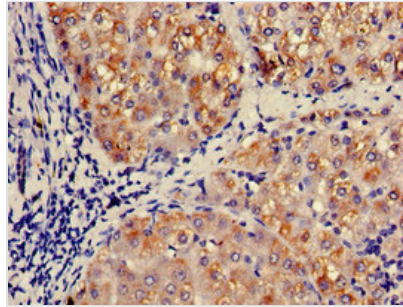
Goat polyclonal to rabbit IgG at 1/50000 dilution

Predicted band size: 11 kDa

Observed band size: 11 kDa



Immunohistochemistry of paraffin-embedded human thyroid tissue using CSB-PA05939A0Rb at dilution of 1:100



Immunohistochemistry of paraffin-embedded human liver tissue using CSB-PA05939A0Rb at dilution of 1:100

## Usage

For Research Use Only. Not for use in diagnostic or therapeutic procedures.