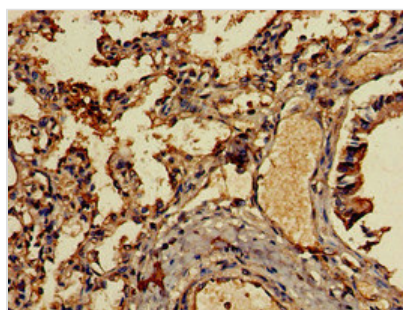




# CCL13 Antibody

<b>Product Code</b>	CSB-PA08939A0Rb
<b>Storage</b>	Upon receipt, store at -20°C or -80°C. Avoid repeated freeze.
<b>Uniprot No.</b>	Q99616
<b>Immunogen</b>	Recombinant Human C-C motif chemokine 13 protein (17-81AA)
<b>Raised In</b>	Rabbit
<b>Species Reactivity</b>	Human
<b>Tested Applications</b>	ELISA, IHC; Recommended dilution: IHC:1:20-1:200
<b>Form</b>	Liquid
<b>Conjugate</b>	Non-conjugated
<b>Storage Buffer</b>	Preservative: 0.03% Proclin 300 Constituents: 50% Glycerol, 0.01M PBS, pH 7.4
<b>Purification Method</b>	>95%, Protein G purified
<b>Isotype</b>	IgG
<b>Clonality</b>	Polyclonal
<b>Alias</b>	C-C motif chemokine 13 (CK-beta-10) (Monocyte chemoattractant protein 4) (Monocyte chemotactic protein 4) (MCP-4) (NCC-1) (Small-inducible cytokine A13) [Cleaved into: C-C motif chemokine 13, long chain; C-C motif chemokine 13, medium chain; C-C motif chemokine 13, short chain], CCL13, MCP4 NCC1 SCYA13
<b>Immunogen Species</b>	Homo sapiens (Human)
<b>Research Area</b>	Immunology
<b>Target Names</b>	CCL13

## Image



Immunohistochemistry of paraffin-embedded human lung tissue using CSB-PA08939A0Rb at dilution of 1:100