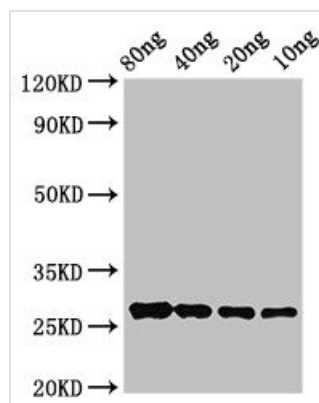




# OLE9 Antibody

<b>Product Code</b>	CSB-PA19957A0Rb
<b>Storage</b>	Upon receipt, store at -20°C or -80°C. Avoid repeated freeze.
<b>Uniprot No.</b>	Q94G86
<b>Immunogen</b>	Recombinant Olea europaea Glucan endo-1,3-beta-D-glucosidase protein (360-460AA)
<b>Raised In</b>	Rabbit
<b>Species Reactivity</b>	Olea europaea
<b>Tested Applications</b>	ELISA, WB; Recommended dilution: WB:1:500-1:5000
<b>Form</b>	Liquid
<b>Conjugate</b>	Non-conjugated
<b>Storage Buffer</b>	Preservative: 0.03% Proclin 300 Constituents: 50% Glycerol, 0.01M PBS, pH 7.4
<b>Purification Method</b>	>95%, Protein G purified
<b>Isotype</b>	IgG
<b>Clonality</b>	Polyclonal
<b>Alias</b>	Glucan endo-1,3-beta-D-glucosidase (EC 3.2.1.39) (Major pollen allergen Ole e 9) (allergen Ole e 9), OLE9
<b>Immunogen Species</b>	Olea europaea
<b>Research Area</b>	Others
<b>Target Names</b>	OLE9

## Image



### Western Blot

Positive WB detected in Recombinant protein

All lanes: OLE9 antibody at 2.8μg/ml

Secondary

Goat polyclonal to rabbit IgG at 1/50000 dilution

predicted band size: 27 kDa

observed band size: 27 kDa