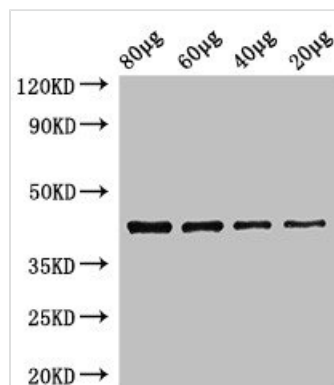




# egfra Antibody

<b>Product Code</b>	CSB-PA20899A0Rb
<b>Storage</b>	Upon receipt, store at -20°C or -80°C. Avoid repeated freeze.
<b>Uniprot No.</b>	F1RA48
<b>Immunogen</b>	Recombinant Zebrafish Epidermal growth factor receptor protein (21-389AA)
<b>Raised In</b>	Rabbit
<b>Species Reactivity</b>	Zebrafish
<b>Tested Applications</b>	ELISA, WB; Recommended dilution: WB:1:500-1:5000
<b>Form</b>	Liquid
<b>Conjugate</b>	Non-conjugated
<b>Storage Buffer</b>	Preservative: 0.03% Proclin 300 Constituents: 50% Glycerol, 0.01M PBS, pH 7.4
<b>Purification Method</b>	>95%, Protein G purified
<b>Isotype</b>	IgG
<b>Clonality</b>	Polyclonal
<b>Product Type</b>	Polyclonal Antibody
<b>Immunogen Species</b>	Danio rerio (Zebrafish) (Brachydanio rerio)
<b>Research Area</b>	Others

## Image



### Western Blot

Positive WB detected in: adult Zebrafish tissue

80µg, 60µg, 40µg, 20µg

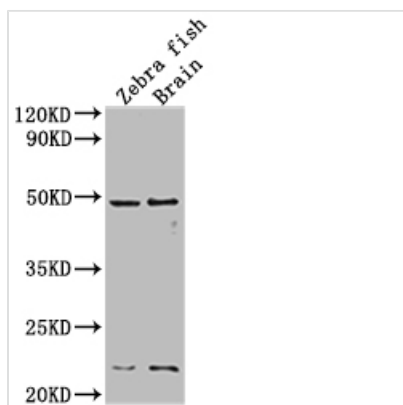
All lanes: egfra antibody at 3.5µg/ml

Secondary

Goat polyclonal to rabbit IgG at 1/50000 dilution

Predicted band size: 43 kDa

Observed band size: 43 kDa



#### Western Blot

Positive WB detected in: adult Zebra fish, adult Zebra fish brain tissue

All lanes: egfra antibody at 1:2000

Secondary

Goat polyclonal to rabbit IgG at 1/50000 dilution

Predicted band size: 43 kDa

Observed band size: 43 kDa