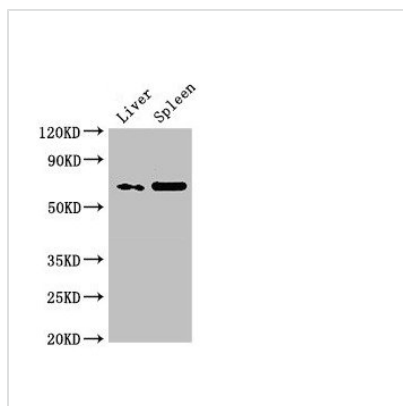




PRSS56 Antibody

Product Code	CSB-PA317372LA01HU
Storage	Upon receipt, store at -20°C or -80°C. Avoid repeated freeze.
Uniprot No.	P0CW18
Immunogen	Recombinant Human Serine protease 56 protein (36-116AA)
Raised In	Rabbit
Species Reactivity	Human, Rat
Tested Applications	ELISA, WB, IHC; Recommended dilution: WB:1:500-1:5000, IHC:1:20-1:200
Form	Liquid
Conjugate	Non-conjugated
Storage Buffer	Preservative: 0.03% Proclin 300 Constituents: 50% Glycerol, 0.01M PBS, pH 7.4
Purification Method	>95%, Protein G purified
Isotype	IgG
Clonality	Polyclonal
Alias	Serine protease 56 (EC 3.4.21.-), PRSS56
Immunogen Species	Homo sapiens (Human)
Research Area	Others
Target Names	PRSS56

Image



Western Blot

Positive WB detected in: Rat liver tissue, Rat spleen tissue

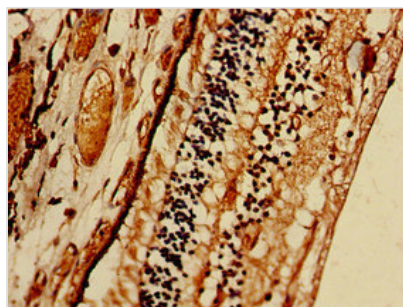
All lanes: PRSS56 antibody at 3µg/ml

Secondary

Goat polyclonal to rabbit IgG at 1/50000 dilution

Predicted band size: 65 kDa

Observed band size: 65 kDa



Immunohistochemistry of paraffin-embedded human eye tissue using CSB-PA317372LA01HU at dilution of 1:100

