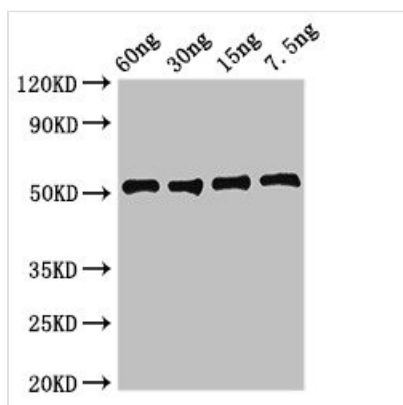




Idh1 Antibody

Product Code	CSB-PA354501HA01SKX
Storage	Upon receipt, store at -20°C or -80°C. Avoid repeated freeze.
Uniprot No.	P65255
Immunogen	Recombinant Staphylococcus aureus L-lactate dehydrogenase 1 protein (1-317AA)
Raised In	Rabbit
Species Reactivity	Staphylococcus aureus
Tested Applications	ELISA, WB; Recommended dilution: WB:1:500-1:5000
Form	Liquid
Conjugate	Non-conjugated
Storage Buffer	Preservative: 0.03% Proclin 300 Constituents: 50% Glycerol, 0.01M PBS, pH 7.4
Purification Method	>95%, Protein G purified
Isotype	IgG
Clonality	Polyclonal
Alias	L-lactate dehydrogenase 1 (L-LDH 1) (EC 1.1.1.27), IdhA, lctE
Immunogen Species	Staphylococcus aureus
Research Area	Others
Target Names	Idh1

Image



Western Blot

Positive WB detected in Recombinant protein

All lanes: Idh1 antibody at 2.7µg/ml

Secondary

Goat polyclonal to rabbit IgG at 1/50000 dilution

Predicted band size: 51 kDa

Observed band size: 51 kDa

Usage

For Research Use Only. Not for use in diagnostic or therapeutic procedures.