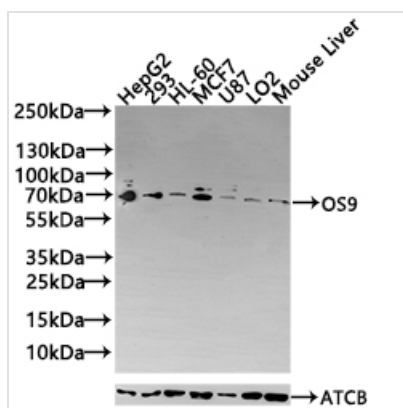




OS9 Antibody

Product Code	CSB-PA613402LA01HU
Storage	Upon receipt, store at -20°C or -80°C. Avoid repeated freeze.
Uniprot No.	Q13438
Immunogen	Recombinant Human Protein OS-9 protein (232-413AA)
Raised In	Rabbit
Species Reactivity	Human, Mouse
Tested Applications	ELISA, WB, IHC; Recommended dilution: WB:1:500-1:2000, IHC:1:50-1:200
Form	Liquid
Conjugate	Non-conjugated
Storage Buffer	Preservative: 0.03% Proclin 300 Constituents: 50% Glycerol, 0.01M PBS, pH 7.4
Purification Method	Antigen affinity purification
Isotype	IgG
Clonality	Polyclonal
Product Type	Polyclonal Antibody
Immunogen Species	Homo sapiens (Human)
Research Area	Cardiovascular
Target Names	OS9

Image



Western Blot

Positive WB detected in: HepG2 whole cell lysate(30µg), 293 whole cell lysate(30µg), HL-60 whole cell lysate(30µg), MCF7 whole cell lysate(30µg), U87 whole cell lysate(30µg), LO2 whole cell lysate(30µg), Mouse Liver tissue lysate(30µg)

All lanes: OS9 antibody at 1:1000

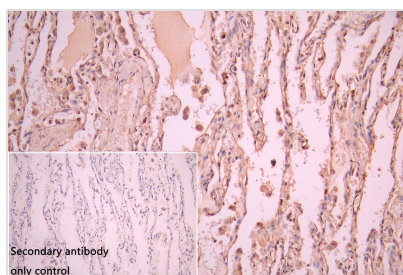
Secondary

Goat polyclonal to rabbit IgG at 1/20000 dilution

Predicted band size: 76,70,68,74,66.64.61 kDa

Observed band size: 70 kDa

Exposure time: 120s



IHC image of CSB-PA613402LA01HU diluted at 1:50 and staining in paraffin-embedded human Lung cancer performed on a Leica Bond™ system. After dewaxing and hydration, antigen retrieval was mediated by high pressure in a citrate buffer (pH 6.0). Section was blocked with 10% normal goat serum 30min at RT. Then primary antibody (1% BSA) was incubated at 4°C overnight. The primary is detected by a Goat



anti-rabbit polymer IgG labeled by HRP and visualized using 0.05% DAB. Secondary antibody only control: uses 1% BSA instead of primary antibody

Usage

For Research Use Only. Not for use in diagnostic or therapeutic procedures.