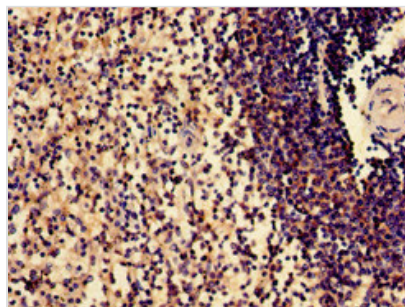




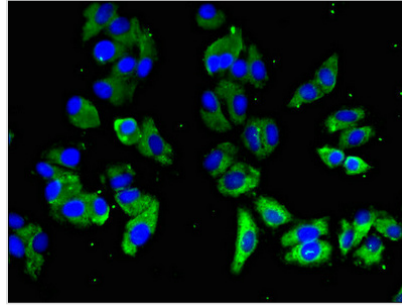
SLAMF1 Antibody

Product Code	CSB-PA614403LA01HU
Storage	Upon receipt, store at -20°C or -80°C. Avoid repeated freeze.
Uniprot No.	Q13291
Immunogen	Recombinant Human Signaling lymphocytic activation molecule protein (69-204AA)
Raised In	Rabbit
Species Reactivity	Human
Tested Applications	ELISA, WB, IHC, IF; Recommended dilution: WB:1:200-1:5000, IHC:1:20-1:200, IF:1:50-1:200
Form	Liquid
Conjugate	Non-conjugated
Storage Buffer	Preservative: 0.03% Proclin 300 Constituents: 50% Glycerol, 0.01M PBS, pH 7.4
Purification Method	>95%, Protein G purified
Isotype	IgG
Clonality	Polyclonal
Alias	Signaling lymphocytic activation molecule (CDw150) (IPO-3) (SLAM family member 1) (CD antigen CD150), SLAMF1, SLAM
Immunogen Species	Homo sapiens (Human)
Research Area	Immunology
Target Names	SLAMF1

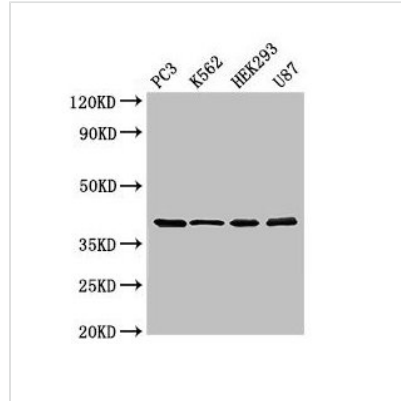
Image



Immunohistochemistry of paraffin-embedded human spleen tissue using CSB-PA614403LA01HU at dilution of 1:100



Immunofluorescent analysis of HepG2 cells using CSB-PA614403LA01HU at dilution of 1:100 and Alexa Fluor 488-conjugated AffiniPure Goat Anti-Rabbit IgG(H+L)



Western Blot

Positive WB detected in: PC-3 whole cell lysate, K562 whole cell lysate, HEK293 whole cell lysate, U87 whole cell lysate

All lanes: SLAMF1 antibody at 3 μ g/ml

Secondary

Goat polyclonal to rabbit IgG at 1/50000 dilution

Predicted band size: 38, 34, 41 kDa

Observed band size: 38 kDa

Usage

For Research Use Only. Not for use in diagnostic or therapeutic procedures.