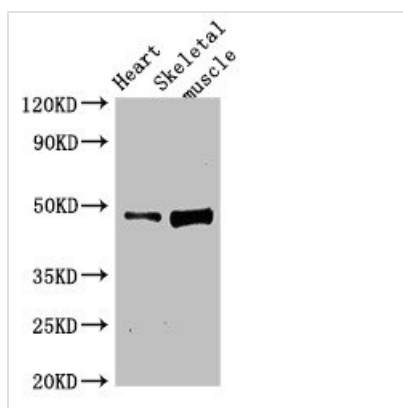




LEXM Antibody

Product Code	CSB-PA670268LA01HU
Storage	Upon receipt, store at -20°C or -80°C. Avoid repeated freeze.
Uniprot No.	Q3ZCV2
Immunogen	Recombinant Human Lymphocyte expansion molecule protein (1-418AA)
Raised In	Rabbit
Species Reactivity	Human, Rat
Tested Applications	ELISA, WB, IHC; Recommended dilution: WB:1:500-1:5000, IHC:1:20-1:200
Form	Liquid
Conjugate	Non-conjugated
Storage Buffer	Preservative: 0.03% Proclin 300 Constituents: 50% Glycerol, 0.01M PBS, pH 7.4
Purification Method	>95%, Protein G purified
Isotype	IgG
Clonality	Polyclonal
Alias	Lymphocyte expansion molecule, LEXM, LEM
Immunogen Species	Homo sapiens (Human)
Research Area	Others
Target Names	LEXM

Image



Western Blot

Positive WB detected in: Rat heart tissue, Rat skeletal muscle tissue

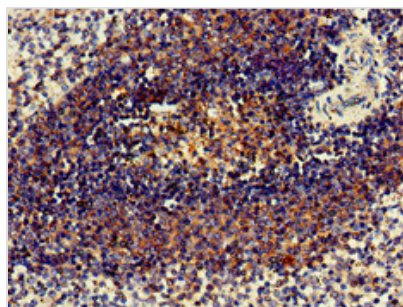
All lanes: LEXM antibody at 4µg/ml

Secondary

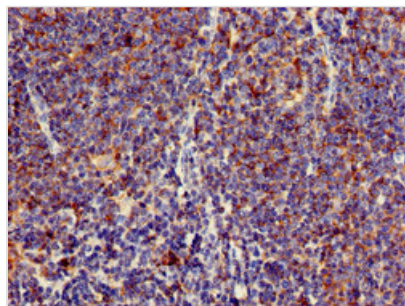
Goat polyclonal to rabbit IgG at 1/50000 dilution

Predicted band size: 48 kDa

Observed band size: 48 kDa



Immunohistochemistry of paraffin-embedded human spleen tissue using CSB-PA670268LA01HU at dilution of 1:100



Immunohistochemistry of paraffin-embedded human lymph node tissue using CSB-PA670268LA01HU at dilution of 1:100

Usage

For Research Use Only. Not for use in diagnostic or therapeutic procedures.