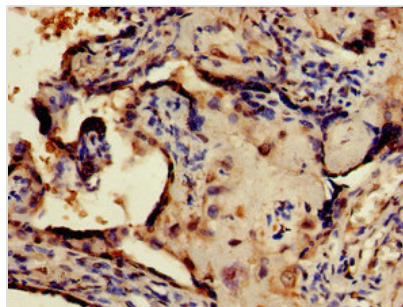




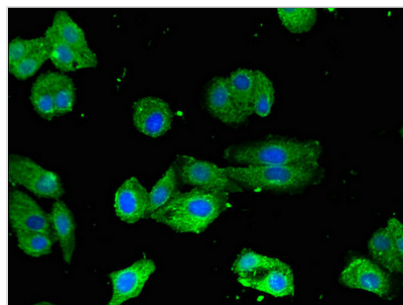
# CRTC1 Antibody

<b>Product Code</b>	CSB-PA757785LA01HU
<b>Storage</b>	Upon receipt, store at -20°C or -80°C. Avoid repeated freeze.
<b>Uniprot No.</b>	Q6UUV9
<b>Immunogen</b>	Recombinant Human CREB-regulated transcription coactivator 1 protein (1-248AA)
<b>Raised In</b>	Rabbit
<b>Species Reactivity</b>	Human
<b>Tested Applications</b>	ELISA, WB, IHC, IF; Recommended dilution: WB:1:200-1:5000, IHC:1:20-1:200, IF:1:50-1:200
<b>Form</b>	Liquid
<b>Conjugate</b>	Non-conjugated
<b>Storage Buffer</b>	Preservative: 0.03% Proclin 300 Constituents: 50% Glycerol, 0.01M PBS, pH 7.4
<b>Purification Method</b>	>95%, Protein G purified
<b>Isotype</b>	IgG
<b>Clonality</b>	Polyclonal
<b>Alias</b>	CREB-regulated transcription coactivator 1 (Mucoepidermoid carcinoma translocated protein 1) (Transducer of regulated cAMP response element-binding protein 1) (TORC-1) (Transducer of CREB protein 1), CRTC1, KIAA0616 MECT1 TORC1 WAMTP1
<b>Immunogen Species</b>	Homo sapiens (Human)
<b>Research Area</b>	Signal Transduction
<b>Target Names</b>	CRTC1

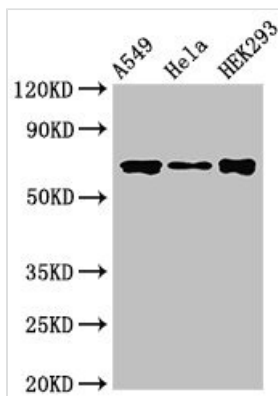
## Image



Immunohistochemistry of paraffin-embedded human placenta tissue using CSB-PA757785LA01HU at dilution of 1:100



Immunofluorescent analysis of HepG2 cells using CSB-PA757785LA01HU at dilution of 1:100 and Alexa Fluor 488-conjugated AffiniPure Goat Anti-Rabbit IgG(H+L)



#### Western Blot

Positive WB detected in: A549 whole cell lysate, HeLa whole cell lysate, HEK293 whole cell lysate  
All lanes: CRT1 antibody at 3.5µg/ml  
Secondary  
Goat polyclonal to rabbit IgG at 1/50000 dilution  
Predicted band size: 68, 69, 63 kDa  
Observed band size: 68 kDa