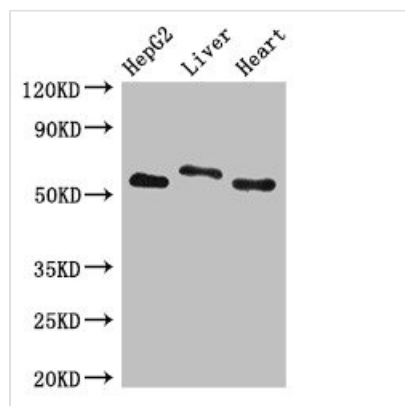




SLC13A5 Antibody

| | |
|----------------------------|--|
| Product Code | CSB-PA768239LA01HU |
| Storage | Upon receipt, store at -20°C or -80°C. Avoid repeated freeze. |
| Uniprot No. | Q86YT5 |
| Immunogen | Recombinant Human Solute carrier family 13 member 5 protein (156-204AA) |
| Raised In | Rabbit |
| Species Reactivity | Human, Mouse, Rat |
| Tested Applications | ELISA, WB, IHC, IF; Recommended dilution: WB:1:500-1:5000, IHC:1:20-1:200, IF:1:50-1:200 |
| Form | Liquid |
| Conjugate | Non-conjugated |
| Storage Buffer | Preservative: 0.03% Proclin 300 Constituents: 50% Glycerol, 0.01M PBS, pH 7.4 |
| Purification Method | >95%, Protein G purified |
| Isotype | IgG |
| Clonality | Polyclonal |
| Alias | Solute carrier family 13 member 5 (Na ⁺)/citrate cotransporter (NaCT) (Sodium-coupled citrate transporter) (Sodium-dependent citrate transporter), SLC13A5, NACT |
| Immunogen Species | Homo sapiens (Human) |
| Research Area | Signal Transduction |
| Target Names | SLC13A5 |

Image



Western Blot

Positive WB detected in: HepG2 whole cell lysate, Rat liver tissue, Mouse heart tissue

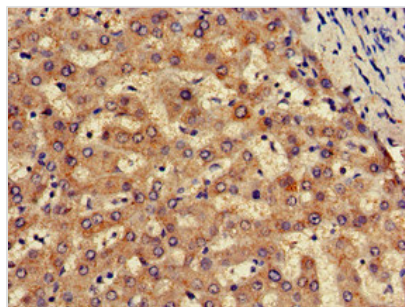
All lanes: SLC13A5 antibody at 2.7μg/ml

Secondary

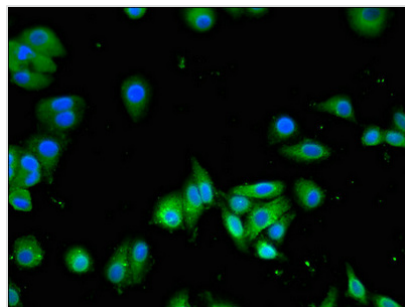
Goat polyclonal to rabbit IgG at 1/50000 dilution

Predicted band size: 64, 59, 62 kDa

Observed band size: 64, 59 kDa



Immunohistochemistry of paraffin-embedded human liver tissue using CSB-PA768239LA01HU at dilution of 1:100



Immunofluorescent analysis of HepG2 cells using CSB-PA768239LA01HU at dilution of 1:100 and Alexa Fluor 488-conjugated AffiniPure Goat Anti-Rabbit IgG(H+L)