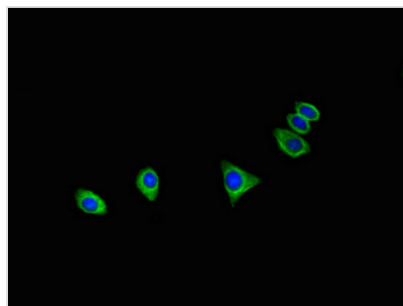




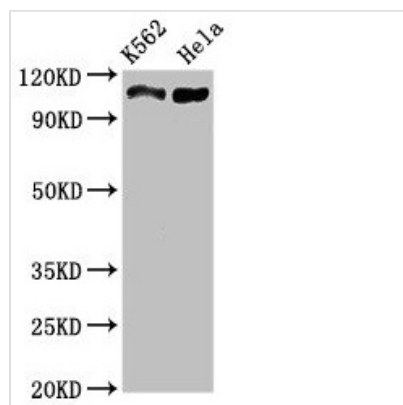
# C16orf62 Antibody

|                            |  |
|----------------------------|--|
| <b>Product Code</b>        | CSB-PA773584HA01HU   |
| <b>Storage</b>             | Upon receipt, store at -20°C or -80°C. Avoid repeated freeze.                    |
| <b>Uniprot No.</b>         | Q7Z3J2   |
| <b>Immunogen</b>           | Recombinant Human UPF0505 protein C16orf62 protein (6-205AA)                     |
| <b>Raised In</b>           | Rabbit   |
| <b>Species Reactivity</b>  | Human  |
| <b>Tested Applications</b> | ELISA, WB, IF; Recommended dilution: WB:1:500-1:5000, IF:1:50-1:200              |
| <b>Form</b>                | Liquid   |
| <b>Conjugate</b>           | Non-conjugated   |
| <b>Storage Buffer</b>      | Preservative: 0.03% Proclin 300<br>Constituents: 50% Glycerol, 0.01M PBS, pH 7.4 |
| <b>Purification Method</b> | >95%, Protein G purified   |
| <b>Isotype</b>             | IgG  |
| <b>Clonality</b>           | Polyclonal   |
| <b>Alias</b>               | UPF0505 protein C16orf62 (Esophageal cancer-associated protein), C16orf62        |
| <b>Immunogen Species</b>   | Homo sapiens (Human)   |
| <b>Research Area</b>       | Cell Biology   |
| <b>Target Names</b>        | C16orf62   |

## Image



Immunofluorescent analysis of HepG2 cells using CSB-PA773584HA01HU at dilution of 1:100 and Alexa Fluor 488-conjugated AffiniPure Goat Anti-Rabbit IgG(H+L)



#### Western Blot

Positive WB detected in: K562 whole cell lysate,  
Hela whole cell lysate

All lanes: C16orf62 antibody at 3 $\mu$ g/ml

Secondary

Goat polyclonal to rabbit IgG at 1/50000 dilution

Predicted band size: 110, 94 kDa

Observed band size: 110 kDa