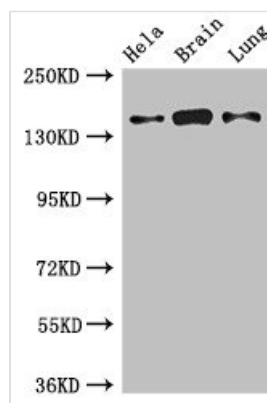




SULF2 Antibody

Product Code	CSB-PA810283LA01HU
Storage	Upon receipt, store at -20°C or -80°C. Avoid repeated freeze.
Uniprot No.	Q8IWU5
Immunogen	Recombinant Human Extracellular sulfatase Sulf-2 protein (463-660AA)
Raised In	Rabbit
Species Reactivity	Human, Mouse, Rat
Tested Applications	ELISA, WB, IHC, IF; Recommended dilution: WB:1:500-1:5000, IHC:1:20-1:200, IF:1:50-1:200
Form	Liquid
Conjugate	Non-conjugated
Storage Buffer	Preservative: 0.03% Proclin 300 Constituents: 50% Glycerol, 0.01M PBS, pH 7.4
Purification Method	>95%, Protein G purified
Isotype	IgG
Clonality	Polyclonal
Alias	Extracellular sulfatase Sulf-2 (hSulf-2) (EC 3.1.6.-), SULF2, KIAA1247
Immunogen Species	Homo sapiens (Human)
Research Area	Signal Transduction
Target Names	SULF2

Image



Western Blot

Positive WB detected in: HeLa whole cell lysate, Mouse brain tissue, Rat lung tissue

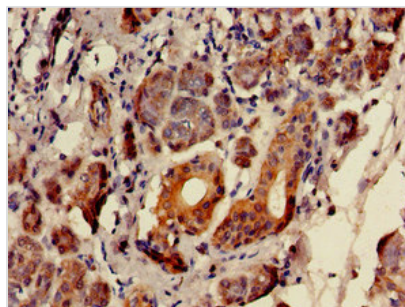
All lanes: SULF2 antibody at 2.7μg/ml

Secondary

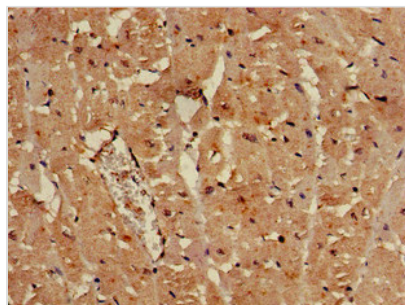
Goat polyclonal to rabbit IgG at 1/50000 dilution

Predicted band size: 101 kDa

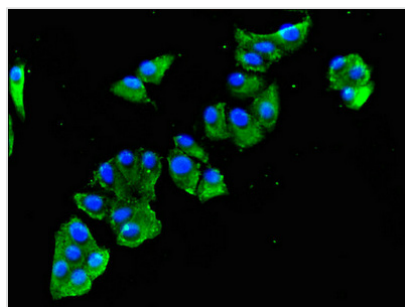
Observed band size: 140 kDa



Immunohistochemistry of paraffin-embedded human salivary gland tissue using CSB-PA810283LA01HU at dilution of 1:100



Immunohistochemistry of paraffin-embedded human heart tissue using CSB-PA810283LA01HU at dilution of 1:100



Immunofluorescent analysis of HepG2 cells using CSB-PA810283LA01HU at dilution of 1:100 and Alexa Fluor 488-conjugated AffiniPure Goat Anti-Rabbit IgG(H+L)