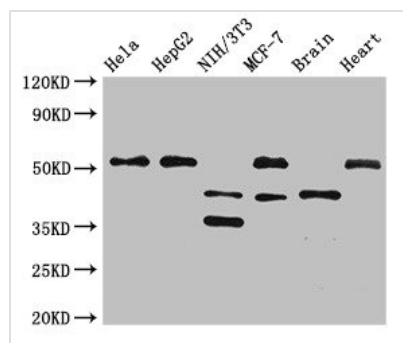




LAX1 Antibody

Product Code	CSB-PA811614LA01HU
Storage	Upon receipt, store at -20°C or -80°C. Avoid repeated freeze.
Uniprot No.	Q8I WV1
Immunogen	Recombinant Human Lymphocyte transmembrane adapter 1 protein (107-298AA)
Raised In	Rabbit
Species Reactivity	Human, Mouse, Rat
Tested Applications	ELISA, WB, IF; Recommended dilution: WB:1:500-1:5000, IF:1:50-1:200
Form	Liquid
Conjugate	Non-conjugated
Storage Buffer	Preservative: 0.03% Proclin 300 Constituents: 50% Glycerol, 0.01M PBS, pH 7.4
Purification Method	>95%, Protein G purified
Isotype	IgG
Clonality	Polyclonal
Alias	Lymphocyte transmembrane adapter 1 (Linker for activation of X cells) (Membrane-associated adapter protein LAX), LAX1, LAX
Immunogen Species	Homo sapiens (Human)
Research Area	Immunology
Target Names	LAX1

Image



Western Blot

Positive WB detected in: HeLa whole cell lysate, HepG2 whole cell lysate, NIH/3T3 whole cell lysate, MCF-7 whole cell lysate, Mouse brain tissue, Rat heart tissue

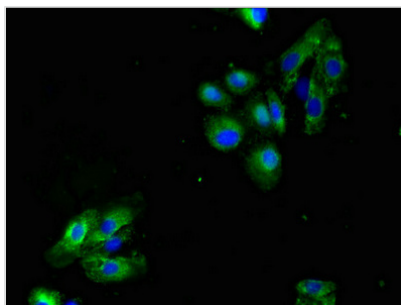
All lanes: LAX1 antibody at 2.7µg/ml

Secondary

Goat polyclonal to rabbit IgG at 1/50000 dilution

Predicted band size: 45, 36, 43 kDa

Observed band size: 51, 45, 36 kDa



Immunofluorescent analysis of HepG2 cells using CSB-PA811614LA01HU at dilution of 1:100 and Alexa Fluor 488-conjugated AffiniPure Goat Anti-Rabbit IgG(H+L)