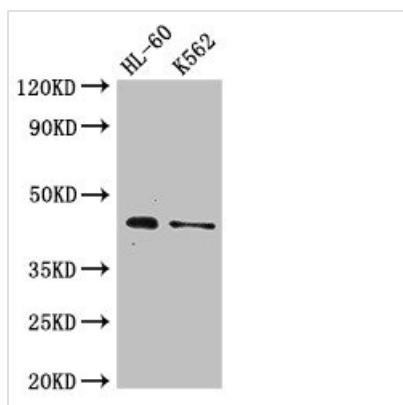




MTERF1 Antibody

Product Code	CSB-PA811872LA01HU
Storage	Upon receipt, store at -20°C or -80°C. Avoid repeated freeze.
Uniprot No.	Q99551
Immunogen	Recombinant Human Transcription termination factor 1, mitochondrial protein (63-232AA)
Raised In	Rabbit
Species Reactivity	Human
Tested Applications	ELISA, WB; Recommended dilution: WB:1:500-1:5000
Form	Liquid
Conjugate	Non-conjugated
Storage Buffer	Preservative: 0.03% Proclin 300 Constituents: 50% Glycerol, 0.01M PBS, pH 7.4
Purification Method	>95%, Protein G purified
Isotype	IgG
Clonality	Polyclonal
Alias	Transcription termination factor 1, mitochondrial (Mitochondrial transcription termination factor 1) (mTERF) (mTERF1), MTERF1, MTERF
Immunogen Species	Homo sapiens (Human)
Research Area	Others
Target Names	MTERF1

Image



Western Blot

Positive WB detected in: HL60 whole cell lysate, K562 whole cell lysate

All lanes: MTERF1 antibody at 2.6µg/ml

Secondary

Goat polyclonal to rabbit IgG at 1/50000 dilution

Predicted band size: 46 kDa

Observed band size: 46 kDa

Usage

For Research Use Only. Not for use in diagnostic or therapeutic procedures.