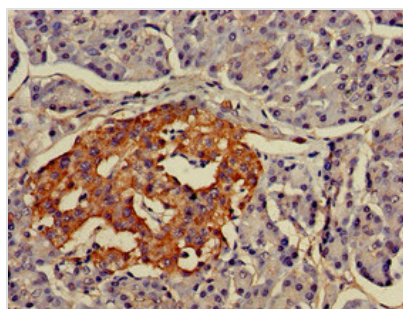




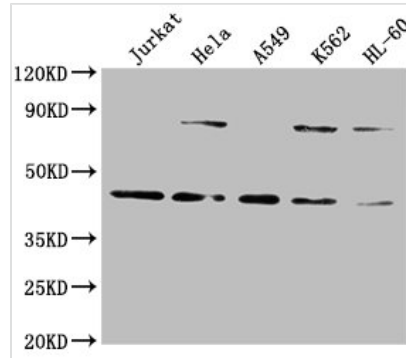
# LMX1A Antibody

<b>Product Code</b>	CSB-PA848414LA01HU
<b>Storage</b>	Upon receipt, store at -20°C or -80°C. Avoid repeated freeze.
<b>Uniprot No.</b>	Q8TE12
<b>Immunogen</b>	Recombinant Human LIM homeobox transcription factor 1-alpha protein (9-86AA)
<b>Raised In</b>	Rabbit
<b>Species Reactivity</b>	Human
<b>Tested Applications</b>	ELISA, WB, IHC; Recommended dilution: WB:1:1000-1:5000, IHC:1:20-1:200
<b>Form</b>	Liquid
<b>Conjugate</b>	Non-conjugated
<b>Storage Buffer</b>	Preservative: 0.03% Proclin 300 Constituents: 50% Glycerol, 0.01M PBS, pH 7.4
<b>Purification Method</b>	>95%, Protein G purified
<b>Isotype</b>	IgG
<b>Clonality</b>	Polyclonal
<b>Alias</b>	LIM homeobox transcription factor 1-alpha (LIM/homeobox protein 1.1) (LMX-1.1) (LIM/homeobox protein LMX1A), LMX1A
<b>Immunogen Species</b>	Homo sapiens (Human)
<b>Research Area</b>	Neuroscience
<b>Target Names</b>	LMX1A

## Image



Immunohistochemistry of paraffin-embedded human pancreatic tissue using CSB-PA848414LA01HU at dilution of 1:100

**Western Blot**

Positive WB detected in: Jurkat whole cell lysate, HeLa whole cell lysate, A549 whole cell lysate, K562 whole cell lysate, HL60 whole cell lysate

All lanes: LMX1A antibody at 1:2000

Secondary

Goat polyclonal to rabbit IgG at 1/50000 dilution

Predicted band size: 43, 15 kDa

Observed band size: 43 kDa

**Usage**

For Research Use Only. Not for use in diagnostic or therapeutic procedures.