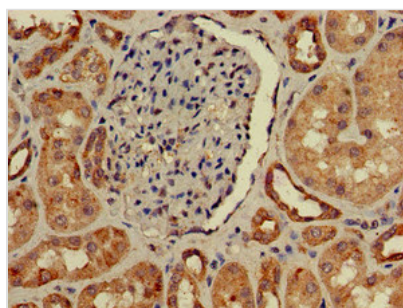




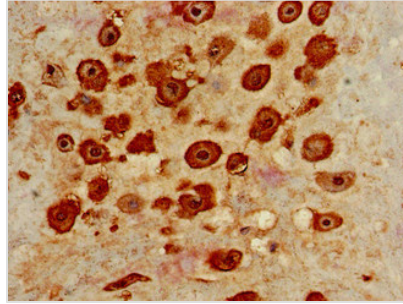
IL22RA2 Antibody

Product Code	CSB-PA850247LA01HU
Storage	Upon receipt, store at -20°C or -80°C. Avoid repeated freeze.
Uniprot No.	Q969J5
Immunogen	Recombinant Human Interleukin-22 receptor subunit alpha-2 protein (22-263AA)
Raised In	Rabbit
Species Reactivity	Human
Tested Applications	ELISA, IHC; Recommended dilution: IHC:1:20-1:200
Form	Liquid
Conjugate	Non-conjugated
Storage Buffer	Preservative: 0.03% Proclin 300 Constituents: 50% Glycerol, 0.01M PBS, pH 7.4
Purification Method	>95%, Protein G purified
Isotype	IgG
Clonality	Polyclonal
Alias	Interleukin-22 receptor subunit alpha-2 (IL-22 receptor subunit alpha-2) (IL-22R-alpha-2) (IL-22RA2) (Cytokine receptor class-II member 10) (Cytokine receptor family 2 member 10) (CRF2-10) (Cytokine receptor family type 2, soluble 1) (CRF2-S1) (Interleukin-22-binding protein) (IL-22BP) (IL22BP) (ZcytoR16), IL22RA2
Immunogen Species	Homo sapiens (Human)
Research Area	Immunology
Target Names	IL22RA2

Image



Immunohistochemistry of paraffin-embedded human kidney tissue using CSB-PA850247LA01HU at dilution of 1:100



Immunohistochemistry of paraffin-embedded human placenta tissue using CSB-PA850247LA01HU at dilution of 1:100

Usage

For Research Use Only. Not for use in diagnostic or therapeutic procedures.