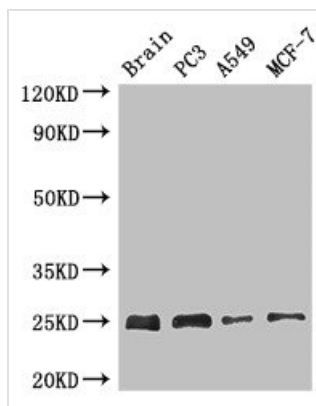




APOPT1 Antibody

| | |
|----------------------------|--|
| Product Code | CSB-PA850312LA01HU |
| Storage | Upon receipt, store at -20°C or -80°C. Avoid repeated freeze. |
| Uniprot No. | Q96IL0 |
| Immunogen | Recombinant Human Apoptogenic protein 1, mitochondrial protein (40-150AA) |
| Raised In | Rabbit |
| Species Reactivity | Human, Mouse |
| Tested Applications | ELISA, WB; Recommended dilution: WB:1:500-1:5000 |
| Form | Liquid |
| Conjugate | Non-conjugated |
| Storage Buffer | Preservative: 0.03% Proclin 300 Constituents: 50% Glycerol, 0.01M PBS, pH 7.4 |
| Purification Method | >95%, Protein G purified |
| Isotype | IgG |
| Clonality | Polyclonal |
| Alias | Apoptogenic protein 1, mitochondrial (APOP-1), APOPT1, APOP1 C14orf153 |
| Immunogen Species | Homo sapiens (Human) |
| Research Area | Cell Biology |
| Target Names | APOPT1 |

Image



Western Blot

Positive WB detected in: Mouse brain tissue, PC-3 whole cell lysate, A549 whole cell lysate, MCF-7 whole cell lysate

All lanes: APOPT1 antibody at 2.7µg/ml

Secondary

Goat polyclonal to rabbit IgG at 1/50000 dilution

predicted band size: 25 kDa

observed band size: 25 kDa

Usage

For Research Use Only. Not for use in diagnostic or therapeutic procedures.