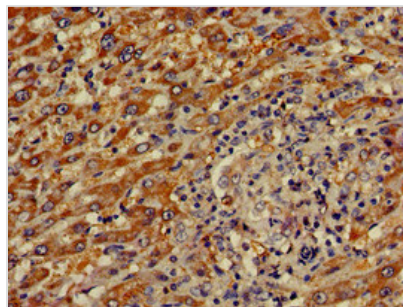




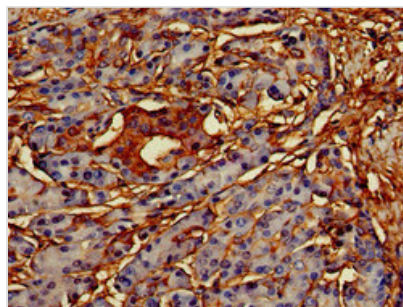
CREB3L1 Antibody

Product Code	CSB-PA856900LA01HU
Storage	Upon receipt, store at -20°C or -80°C. Avoid repeated freeze.
Uniprot No.	Q96BA8
Immunogen	Recombinant Human Cyclic AMP-responsive element-binding protein 3-like protein 1 protein (396-500AA)
Raised In	Rabbit
Species Reactivity	Human, Mouse, Rat
Tested Applications	ELISA, WB, IHC, IF; Recommended dilution: WB:1:200-1:5000, IHC:1:20-1:200, IF:1:50-1:200
Form	Liquid
Conjugate	Non-conjugated
Storage Buffer	Preservative: 0.03% Proclin 300 Constituents: 50% Glycerol, 0.01M PBS, pH 7.4
Purification Method	>95%, Protein G purified
Isotype	IgG
Clonality	Polyclonal
Alias	Cyclic AMP-responsive element-binding protein 3-like protein 1 (cAMP-responsive element-binding protein 3-like protein 1) (Old astrocyte specifically-induced substance) (OASIS) [Cleaved into: Processed cyclic AMP-responsive element-binding protein 3-like protein 1], CREB3L1, OASIS
Immunogen Species	Homo sapiens (Human)
Research Area	Signal Transduction
Target Names	CREB3L1

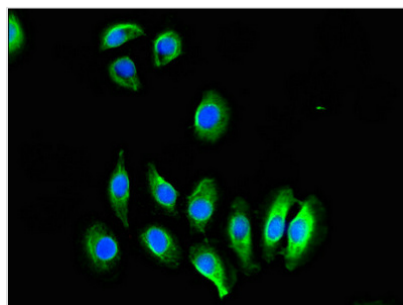
Image



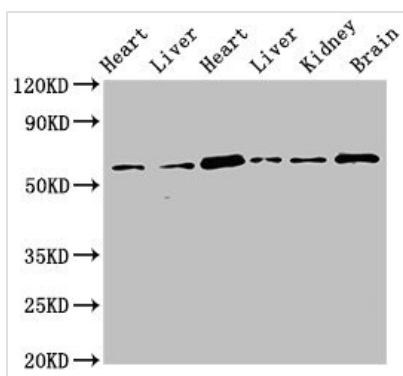
Immunohistochemistry of paraffin-embedded human liver cancer using CSB-PA856900LA01HU at dilution of 1:100



Immunohistochemistry of paraffin-embedded human pancreatic tissue using CSB-PA856900LA01HU at dilution of 1:100



Immunofluorescent analysis of A549 cells using CSB-PA856900LA01HU at dilution of 1:100 and Alexa Fluor 488-conjugated AffiniPure Goat Anti-Rabbit IgG(H+L)



Western Blot

Positive WB detected in: Rat heart tissue, Rat liver tissue, Mouse heart tissue, Mouse liver tissue, Mouse kidney tissue, Mouse brain tissue

All lanes: CREB3L1 antibody at 3.4µg/ml

Secondary

Goat polyclonal to rabbit IgG at 1/50000 dilution

Predicted band size: 58, 48 kDa

Observed band size: 58 kDa