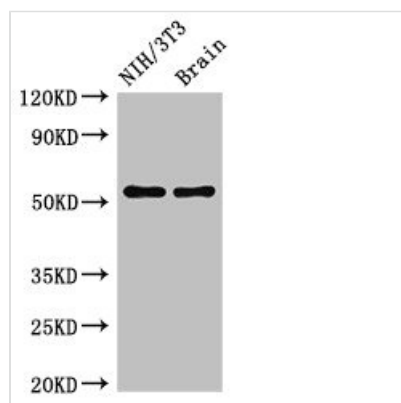




OLFM1 Antibody

Product Code	CSB-PA858725LA01HU
Storage	Upon receipt, store at -20°C or -80°C. Avoid repeated freeze.
Uniprot No.	Q99784
Immunogen	Recombinant Human Noelin protein (374-441AA)
Raised In	Rabbit
Species Reactivity	Human, Mouse
Tested Applications	ELISA, WB, IHC; Recommended dilution: WB:1:500-1:5000, IHC:1:20-1:200
Form	Liquid
Conjugate	Non-conjugated
Storage Buffer	Preservative: 0.03% Proclin 300 Constituents: 50% Glycerol, 0.01M PBS, pH 7.4
Purification Method	>95%, Protein G purified
Isotype	IgG
Clonality	Polyclonal
Alias	Noelin (Neuronal olfactomedin-related ER localized protein) (Olfactomedin-1), OLFM1, NOE1 NOEL1
Immunogen Species	Homo sapiens (Human)
Research Area	Neuroscience
Target Names	OLFM1

Image



Western Blot

Positive WB detected in: NIH/3T3 whole cell lysate, Mouse brain tissue

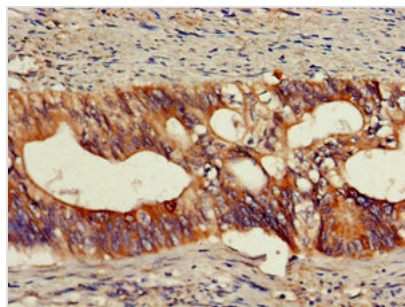
All lanes: OLFM1 antibody at 2.5µg/ml

Secondary

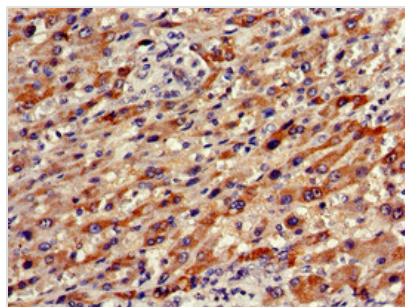
Goat polyclonal to rabbit IgG at 1/50000 dilution

Predicted band size: 56, 18, 55, 16, 53 kDa

Observed band size: 56 kDa



Immunohistochemistry of paraffin-embedded human colon cancer using CSB-PA858725LA01HU at dilution of 1:100



Immunohistochemistry of paraffin-embedded human liver cancer using CSB-PA858725LA01HU at dilution of 1:100

Usage

For Research Use Only. Not for use in diagnostic or therapeutic procedures.