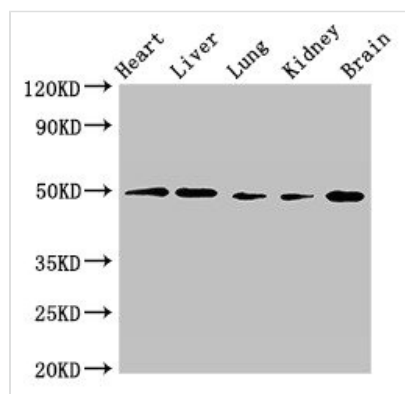




GPR22 Antibody

Product Code	CSB-PA859519LA01HU
Storage	Upon receipt, store at -20°C or -80°C. Avoid repeated freeze.
Uniprot No.	Q99680
Immunogen	Recombinant Human Probable G-protein coupled receptor 22 protein (246-307AA)
Raised In	Rabbit
Species Reactivity	Human, Mouse
Tested Applications	ELISA, WB, IF; Recommended dilution: WB:1:500-1:5000, IF:1:50-1:200
Form	Liquid
Conjugate	Non-conjugated
Storage Buffer	Preservative: 0.03% Proclin 300 Constituents: 50% Glycerol, 0.01M PBS, pH 7.4
Purification Method	>95%, Protein G purified
Isotype	IgG
Clonality	Polyclonal
Alias	Probable G-protein coupled receptor 22, GPR22
Immunogen Species	Homo sapiens (Human)
Research Area	Others
Target Names	GPR22

Image



Western Blot

Positive WB detected in: Mouse heart tissue, Mouse liver tissue, Mouse lung tissue, Mouse kidney tissue, Mouse brain tissue

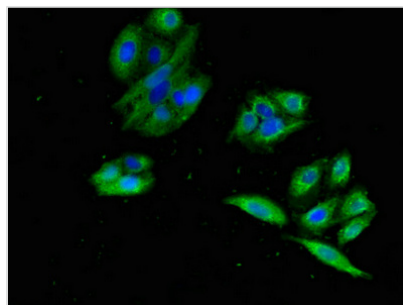
All lanes: GPR22 antibody at 2.5μg/ml

Secondary

Goat polyclonal to rabbit IgG at 1/50000 dilution

Predicted band size: 50 kDa

Observed band size: 50 kDa



Immunofluorescent analysis of HepG2 cells using CSB-PA859519LA01HU at dilution of 1:100 and Alexa Fluor 488-conjugated AffiniPure Goat Anti-Rabbit IgG(H+L)