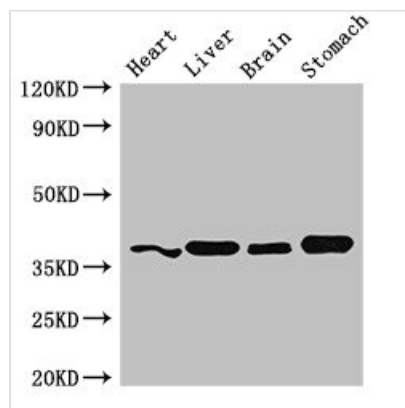




YIPF3 Antibody

Product Code	CSB-PA863928LA01HU
Storage	Upon receipt, store at -20°C or -80°C. Avoid repeated freeze.
Uniprot No.	Q9GZM5
Immunogen	Recombinant Human Protein YIPF3 protein (2-148AA)
Raised In	Rabbit
Species Reactivity	Human, Mouse
Tested Applications	ELISA, WB, IHC, IF; Recommended dilution: WB:1:500-1:5000, IHC:1:20-1:200, IF:1:50-1:200
Form	Liquid
Conjugate	Non-conjugated
Storage Buffer	Preservative: 0.03% Proclin 300 Constituents: 50% Glycerol, 0.01M PBS, pH 7.4
Purification Method	>95%, Protein G purified
Isotype	IgG
Clonality	Polyclonal
Alias	Protein YIPF3 (Killer lineage protein 1) (Natural killer cell-specific antigen KLIP1) (YIP1 family member 3) [Cleaved into: Protein YIPF3, 36 kDa form III], YIPF3, C6orf109 KLIP1
Immunogen Species	Homo sapiens (Human)
Research Area	Cardiovascular
Target Names	YIPF3

Image



Western Blot

Positive WB detected in: Mouse heart tissue, Mouse liver tissue, Mouse brain tissue, Mouse stomach tissue

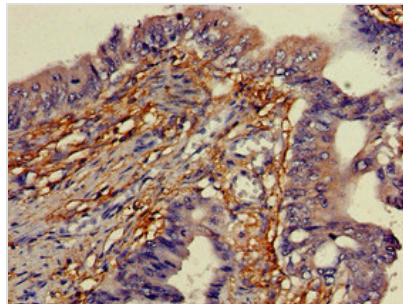
All lanes: YIPF3 antibody at 3μg/ml

Secondary

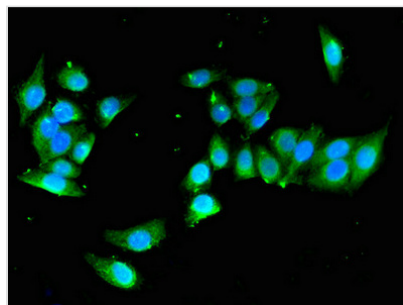
Goat polyclonal to rabbit IgG at 1/50000 dilution

Predicted band size: 39 kDa

Observed band size: 39 kDa



Immunohistochemistry of paraffin-embedded human colon cancer using CSB-PA863928LA01HU at dilution of 1:100



Immunofluorescent analysis of PC-3 cells using CSB-PA863928LA01HU at dilution of 1:100 and Alexa Fluor 488-conjugated AffiniPure Goat Anti-Rabbit IgG(H+L)