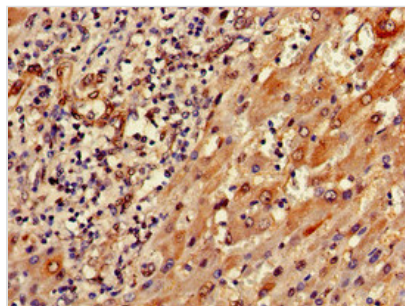




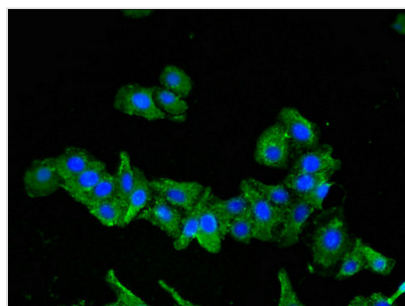
SEMA6A Antibody

Product Code	CSB-PA875655YA01HU
Storage	Upon receipt, store at -20°C or -80°C. Avoid repeated freeze.
Uniprot No.	Q9H2E6
Immunogen	Recombinant Human Semaphorin-6A protein (755-990AA)
Raised In	Rabbit
Species Reactivity	Human
Tested Applications	ELISA, IHC, IF; Recommended dilution: IHC:1:20-1:200, IF:1:50-1:200
Form	Liquid
Conjugate	Non-conjugated
Storage Buffer	Preservative: 0.03% Proclin 300 Constituents: 50% Glycerol, 0.01M PBS, pH 7.4
Purification Method	>95%, Protein G purified
Isotype	IgG
Clonality	Polyclonal
Alias	Semaphorin-6A (Semaphorin VIA) (Sema VIA) (Semaphorin-6A-1) (SEMA6A-1), SEMA6A, KIAA1368 SEMAQ
Immunogen Species	Homo sapiens (Human)
Research Area	Neuroscience
Target Names	SEMA6A

Image



Immunohistochemistry of paraffin-embedded human liver cancer using CSB-PA875655YA01HU at dilution of 1:100



Immunofluorescent analysis of HepG2 cells using CSB-PA875655YA01HU at dilution of 1:100 and Alexa Fluor 488-conjugated AffiniPure Goat Anti-Rabbit IgG(H+L)



Usage

For Research Use Only. Not for use in diagnostic or therapeutic procedures.